

Product datasheet for **TA342496**

C3ORF31 (TAMM41) Rabbit Polyclonal Antibody

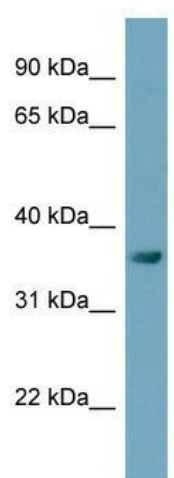
Product data:

Product Type:	Primary Antibodies
Applications:	WB
Recommended Dilution:	WB
Reactivity:	Human
Host:	Rabbit
Isotype:	IgG
Clonality:	Polyclonal
Immunogen:	The immunogen for anti-C3orf31 antibody: synthetic peptide directed towards the middle region of human C3orf31. Synthetic peptide located within the following region: LPKTLQQQINHIMDPPGKNRDVEETLFQVAHDPDCGDVRLGLKKSVIYS
Formulation:	Liquid. Purified antibody supplied in 1x PBS buffer with 0.09% (w/v) sodium azide and 2% sucrose. <i>Note that this product is shipped as lyophilized powder to China customers.</i>
Conjugation:	Unconjugated
Storage:	Store at -20°C as received.
Stability:	Stable for 12 months from date of receipt.
Predicted Protein Size:	36 kDa
Gene Name:	TAM41 mitochondrial translocator assembly and maintenance homolog
Database Link:	NP_620162 Entrez Gene 132001 Human Q96BW9
Background:	May be involved in the translocation of transit peptide-containing proteins across the mitochondrial inner membrane.
Synonyms:	C3orf31; RAM41; TAM41
Note:	Immunogen Sequence Homology: Dog: 100%; Pig: 100%; Rat: 100%; Horse: 100%; Human: 100%; Bovine: 100%; Rabbit: 100%; Guinea pig: 100%; Mouse: 92%; Zebrafish: 85%
Protein Families:	Transcription Factors



[View online »](#)

Product images:



WB Suggested Anti-C3orf31 Antibody Titration:
0.2-1 ug/ml; ELISA Titer: 1: 312500; Positive
Control: OVCAR-3 cell lysate