

## Product datasheet for **TA342495**

### **C3ORF31 (TAMM41) Rabbit Polyclonal Antibody**

#### **Product data:**

<b>Product Type:</b>	Primary Antibodies
<b>Applications:</b>	IHC, WB
<b>Recommended Dilution:</b>	WB, IHC
<b>Reactivity:</b>	Human
<b>Host:</b>	Rabbit
<b>Isotype:</b>	IgG
<b>Clonality:</b>	Polyclonal
<b>Immunogen:</b>	The immunogen for anti-C3orf31 antibody: synthetic peptide directed towards the N terminal of human C3orf31. Synthetic peptide located within the following region: QSSWVTRKILSHFPEELSLAFVYGSGVYRQAGPSSDQKNAMLDVFTVD
<b>Formulation:</b>	Liquid. Purified antibody supplied in 1x PBS buffer with 0.09% (w/v) sodium azide and 2% sucrose. <i>Note that this product is shipped as lyophilized powder to China customers.</i>
<b>Conjugation:</b>	Unconjugated
<b>Storage:</b>	Store at -20°C as received.
<b>Stability:</b>	Stable for 12 months from date of receipt.
<b>Predicted Protein Size:</b>	36 kDa
<b>Gene Name:</b>	TAM41 mitochondrial translocator assembly and maintenance homolog
<b>Database Link:</b>	<a href="#">NP_620162</a> <a href="#">Entrez Gene 132001 Human</a> <a href="#">Q96BW9</a>
<b>Background:</b>	May be involved in the translocation of transit peptide-containing proteins across the mitochondrial inner membrane.
<b>Synonyms:</b>	C3orf31; RAM41; TAM41
<b>Note:</b>	Immunogen Sequence Homology: Pig: 100%; Human: 100%; Bovine: 100%; Rat: 93%; Guinea pig: 93%; Horse: 92%; Dog: 86%; Rabbit: 86%; Mouse: 77%
<b>Protein Families:</b>	Transcription Factors

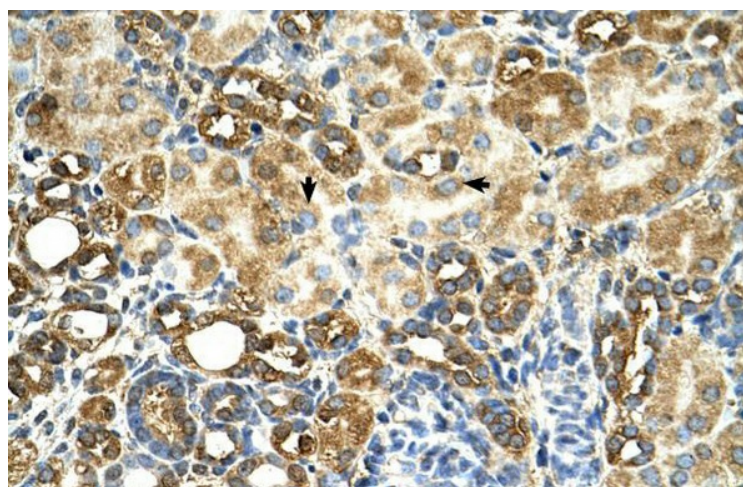


[View online »](#)

Product images:



WB Suggested Antibody Titration: 2.5 ug/ml;  
Positive Control: HepG0



Human kidney