

Product datasheet for **TA342494**

C3ORF31 (TAMM41) Rabbit Polyclonal Antibody

Product data:

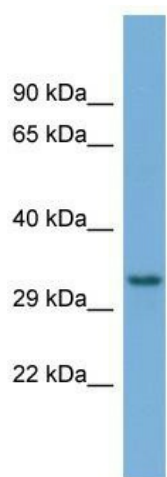
Product Type:	Primary Antibodies
Applications:	WB
Recommended Dilution:	WB
Reactivity:	Human
Host:	Rabbit
Isotype:	IgG
Clonality:	Polyclonal
Immunogen:	The immunogen for anti-TAMM41 antibody is: synthetic peptide directed towards the C-terminal region of Human TAMM41. Synthetic peptide located within the following region: VVGEDKTKVLNIVKPNIAHFRELYGSILQENPQVVYKSQQGWLEIDKSPE
Formulation:	Liquid. Purified antibody supplied in 1x PBS buffer with 0.09% (w/v) sodium azide and 2% sucrose. <i>Note that this product is shipped as lyophilized powder to China customers.</i>
Purification:	Affinity Purified
Conjugation:	Unconjugated
Storage:	Store at -20°C as received.
Stability:	Stable for 12 months from date of receipt.
Predicted Protein Size:	34 kDa
Gene Name:	TAM41 mitochondrial translocator assembly and maintenance homolog
Database Link:	NP_620162 Entrez Gene 132001 Human Q96BW9
Background:	May be involved in the translocation of transit peptide-containing proteins across the mitochondrial inner membrane.
Synonyms:	C3orf31; RAM41; TAM41
Note:	Immunogen Sequence Homology: Pig: 100%; Horse: 100%; Human: 100%; Bovine: 93%; Guinea pig: 93%; Dog: 86%; Rat: 86%; Rabbit: 86%; Mouse: 79%



[View online »](#)

Protein Families: Transcription Factors

Product images:



Host: Rabbit; Target Name: TAMM41; Sample Tissue: OVCAR-3 Whole Cell lysates; Antibody Dilution: 1.0 ug/ml