

## Product datasheet for **TA342493**

### **BATF2 Rabbit Polyclonal Antibody**

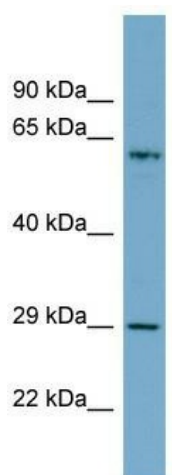
#### **Product data:**

Product Type:	Primary Antibodies
Applications:	WB
Recommended Dilution:	WB
Reactivity:	Human
Host:	Rabbit
Isotype:	IgG
Clonality:	Polyclonal
Immunogen:	The immunogen for anti-BATF2 antibody: synthetic peptide directed towards the N terminal of human BATF2. Synthetic peptide located within the following region: MHLCCGNGLLTQTDPKQQRQLKKQKNRAAAQRSRQKHTDKADALHQQHE
Formulation:	Liquid. Purified antibody supplied in 1x PBS buffer with 0.09% (w/v) sodium azide and 2% sucrose. <i>Note that this product is shipped as lyophilized powder to China customers.</i>
Conjugation:	Unconjugated
Storage:	Store at -20°C as received.
Stability:	Stable for 12 months from date of receipt.
Predicted Protein Size:	29 kDa
Gene Name:	basic leucine zipper ATF-like transcription factor 2
Database Link:	<a href="#">NP_612465</a> <a href="#">Entrez Gene 116071 Human</a> <a href="#">Q8N1L9</a>
Background:	The function remains unknown.
Synonyms:	SARI
Note:	Immunogen Sequence Homology: Dog: 100%; Horse: 100%; Human: 100%; Rabbit: 100%; Pig: 93%; Rat: 93%; Mouse: 93%; Bovine: 93%; Guinea pig: 93%
Protein Families:	Transcription Factors



[View online »](#)

## Product images:



WB Suggested Anti-BATF2 Antibody Titration: 0.2-1 ug/ml; ELISA Titer: 1: 1562500; Positive Control: PANC1 cell lysate