

Product datasheet for **TA342490**

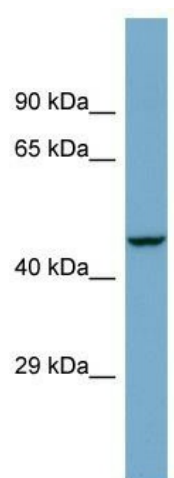
ZFP38 (ZSCAN21) Rabbit Polyclonal Antibody

Product data:

Product Type:	Primary Antibodies
Applications:	WB
Recommended Dilution:	WB
Reactivity:	Human
Host:	Rabbit
Isotype:	IgG
Clonality:	Polyclonal
Immunogen:	The immunogen for anti-ZSCAN21 antibody is: synthetic peptide directed towards the middle region of Human ZSCAN21. Synthetic peptide located within the following region: EALSQRLVLCCEWLRPEIHTKEQILELLVLEQFLTILPQELQAWVQEHC
Formulation:	Liquid. Purified antibody supplied in 1x PBS buffer with 0.09% (w/v) sodium azide and 2% sucrose. <i>Note that this product is shipped as lyophilized powder to China customers.</i>
Purification:	Affinity Purified
Conjugation:	Unconjugated
Storage:	Store at -20°C as received.
Stability:	Stable for 12 months from date of receipt.
Predicted Protein Size:	52 kDa
Gene Name:	zinc finger and SCAN domain containing 21
Database Link:	NP_666019 Entrez Gene 7589 Human Q9Y5A6
Background:	Strong transcriptional activator.
Synonyms:	NY-REN-21; Zipro1; ZNF38
Note:	Immunogen Sequence Homology: Dog: 100%; Pig: 100%; Rat: 100%; Horse: 100%; Human: 100%; Mouse: 100%; Guinea pig: 100%; Bovine: 93%; Rabbit: 86%
Protein Families:	Transcription Factors



[View online »](#)

Product images:

Host: Rabbit; Target Name: ZSCAN21; Sample Tissue: COLO205 Whole cell lysates; Antibody Dilution: 1.0 ug/ml