

Product datasheet for **TA342486**

IRX2 Rabbit Polyclonal Antibody

Product data:

Product Type:	Primary Antibodies
Applications:	WB
Recommended Dilution:	WB
Reactivity:	Human
Host:	Rabbit
Isotype:	IgG
Clonality:	Polyclonal
Immunogen:	The immunogen for anti-IRX2 antibody: synthetic peptide directed towards the N terminal of human IRX2. Synthetic peptide located within the following region: AYPYQLNDPAYRKNATRDATLTKAWLNEHRKNPYPTKGEKIMLAIITKM
Formulation:	Liquid. Purified antibody supplied in 1x PBS buffer with 0.09% (w/v) sodium azide and 2% sucrose. <i>Note that this product is shipped as lyophilized powder to China customers.</i>
Conjugation:	Unconjugated
Storage:	Store at -20°C as received.
Stability:	Stable for 12 months from date of receipt.
Predicted Protein Size:	49 kDa
Gene Name:	iroquois homeobox 2
Database Link:	NP_150366 Entrez Gene 153572 Human Q9BZ11
Background:	IRX2 is a member of the Iroquois homeobox gene family. Members of this family appear to play multiple roles during pattern formation of vertebrate embryos. [supplied by OMIM, Apr 2004]. Transcript Variant: This variant (1) represents the longer transcript. ##Evidence-Data-START## Transcript exon combination :: AB188492.1 [ECO:0000332] RNAseq introns :: single sample supports all introns ERS025081, ERS025082 [ECO:0000348] ##Evidence-Data-END## COMPLETENESS: complete on the 3' end.
Synonyms:	IRXA2

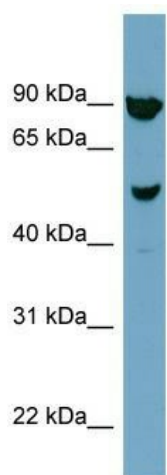


[View online »](#)

Note: Immunogen Sequence Homology: Dog: 100%; Pig: 100%; Rat: 100%; Horse: 100%; Human: 100%; Mouse: 100%; Bovine: 100%; Rabbit: 100%; Zebrafish: 100%; Guinea pig: 100%

Protein Families: Transcription Factors

Product images:



WB Suggested Anti-IRX2 Antibody Titration: 0.2-1 ug/ml; ELISA Titer: 1: 312500; Positive Control: NCI-H226 cell lysate