

## Product datasheet for **TA342480**

### E2F8 Rabbit Polyclonal Antibody

#### Product data:

Product Type:	Primary Antibodies
Applications:	WB
Recommended Dilution:	WB
Reactivity:	Human
Host:	Rabbit
Isotype:	IgG
Clonality:	Polyclonal
Immunogen:	The immunogen for anti-E2F8 antibody: synthetic peptide directed towards the middle region of human E2F8. Synthetic peptide located within the following region: QLVAESFFRTPGGPTKPTSSSCMDFEGANKTSLGTLFVPQRKLEVSTEDV
Formulation:	Liquid. Purified antibody supplied in 1x PBS buffer with 0.09% (w/v) sodium azide and 2% sucrose. <i>Note that this product is shipped as lyophilized powder to China customers.</i>
Conjugation:	Unconjugated
Storage:	Store at -20°C as received.
Stability:	Stable for 12 months from date of receipt.
Predicted Protein Size:	94 kDa
Gene Name:	E2F transcription factor 8
Database Link:	<a href="#">NP_078956</a> <a href="#">Entrez Gene 79733 Human</a> <a href="#">A0AVK6</a>
Background:	This gene encodes a member of a family of transcription factors which regulate the expression of genes required for progression through the cell cycle. The encoded protein regulates progression from G1 to S phase by ensuring the nucleus divides at the proper time. Multiple alternatively spliced variants, encoding the same protein, have been identified. [provided by RefSeq, Jan 2012]
Synonyms:	E2F-8

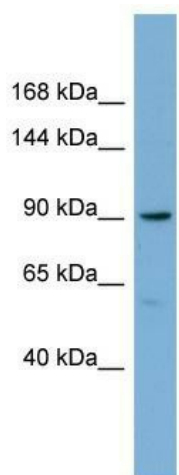


[View online »](#)

**Note:** Immunogen Sequence Homology: Dog: 100%; Pig: 100%; Rat: 100%; Horse: 100%; Human: 100%; Guinea pig: 100%; Mouse: 93%; Rabbit: 93%; Bovine: 92%

**Protein Families:** Druggable Genome

**Product images:**



WB Suggested Anti-E2F8 Antibody Titration: 0.2-1 ug/ml; ELISA Titer: 1: 1562500; Positive Control: COLO205 cell lysate