

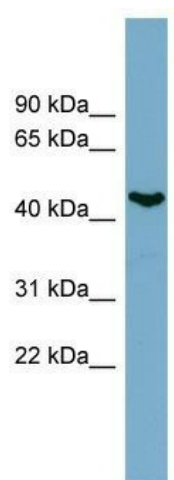
Product datasheet for **TA342476**

IRX6 Rabbit Polyclonal Antibody

Product data:

| | |
|-------------------------|---|
| Product Type: | Primary Antibodies |
| Applications: | WB |
| Recommended Dilution: | WB |
| Reactivity: | Human |
| Host: | Rabbit |
| Isotype: | IgG |
| Clonality: | Polyclonal |
| Immunogen: | The immunogen for anti-IRX6 antibody: synthetic peptide directed towards the N terminal of human IRX6. Synthetic peptide located within the following region: SDVASGSTPAPALCCAPYDSRLLGSARPELGAALGIYGAPYAAAAAQS |
| Formulation: | Liquid. Purified antibody supplied in 1x PBS buffer with 0.09% (w/v) sodium azide and 2% sucrose. |
| Conjugation: | Unconjugated |
| Storage: | Store at -20°C as received. |
| Stability: | Stable for 12 months from date of receipt. |
| Predicted Protein Size: | 48 kDa |
| Gene Name: | iroquois homeobox 6 |
| Database Link: | NP_077311 Entrez Gene 79190 Human P78412 |
| Background: | IRX6 is one Iroquois (Irx) proteins comprise a family of homeodomain-containing transcription factors involved in patterning and regionalization of embryonic tissues in both vertebrates and invertebrates. |
| Synonyms: | IRX-3; IRX7; IRXB3 |
| Note: | Immunogen Sequence Homology: Pig: 100%; Rat: 100%; Horse: 100%; Human: 100%; Mouse: 100%; Bovine: 100%; Guinea pig: 100%; Dog: 93%; Rabbit: 86% |
| Protein Families: | Transcription Factors |


[View online »](#)

Product images:


WB Suggested Anti-IRX6 Antibody Titration: 0.2-1 ug/ml; ELISA Titer: 1: 312500; Positive Control: PANC1 cell lysate