

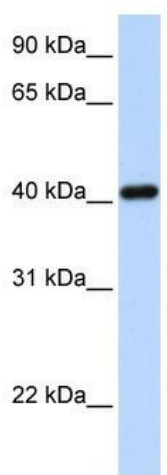
## Product datasheet for TA342475

### IRX6 Rabbit Polyclonal Antibody

#### Product data:

Product Type:	Primary Antibodies
Applications:	WB
Recommended Dilution:	WB
Reactivity:	Human
Host:	Rabbit
Isotype:	IgG
Clonality:	Polyclonal
Immunogen:	The immunogen for anti-IRX6 antibody: synthetic peptide directed towards the N terminal of human IRX6. Synthetic peptide located within the following region: SFPHFGHPYRGASQFLASASSSTTCCESTQRSVSDVASGSTPAPALCCAP
Formulation:	Liquid. Purified antibody supplied in 1x PBS buffer with 0.09% (w/v) sodium azide and 2% sucrose.
Conjugation:	Unconjugated
Storage:	Store at -20°C as received.
Stability:	Stable for 12 months from date of receipt.
Predicted Protein Size:	48 kDa
Gene Name:	iroquois homeobox 6
Database Link:	<a href="#">NP_077311</a> <a href="#">Entrez Gene 79190 Human</a> <a href="#">P78412</a>
Background:	IRX6 is one Iroquois (Irx) proteins comprise a family of homeodomain-containing transcription factors involved in patterning and regionalization of embryonic tissues in both vertebrates and invertebrates.
Synonyms:	IRX-3; IRX7; IRXB3
Note:	Immunogen Sequence Homology: Human: 100%; Rabbit: 93%; Dog: 86%; Pig: 86%; Horse: 86%; Bovine: 86%; Guinea pig: 86%; Rat: 85%
Protein Families:	Transcription Factors


[View online »](#)

**Product images:**

WB Suggested Anti-IRX6 Antibody Titration: 0.2-1 ug/ml; ELISA Titer: 1: 1562500; Positive Control: 293T cell lysate