

Product datasheet for **TA342474**

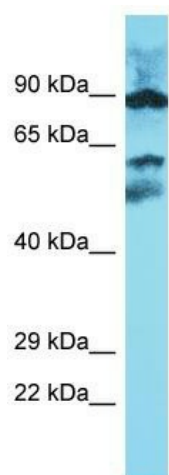
METT10D (METTL16) Rabbit Polyclonal Antibody

Product data:

Product Type:	Primary Antibodies
Applications:	WB
Recommended Dilution:	WB
Reactivity:	Human
Host:	Rabbit
Isotype:	IgG
Clonality:	Polyclonal
Immunogen:	The immunogen for anti-METTL16 antibody is: synthetic peptide directed towards the middle region of Human METTL16. Synthetic peptide located within the following region: QGR ^T M ^R W ^A L ^A W ^S F ^Y D ^D V ^T P ^S P ^S K ^R R ^R K ^L E ^K P ^R K ^P I ^T F ^V L ^A S ^V M ^K E ^L S ^L
Formulation:	Liquid. Purified antibody supplied in 1x PBS buffer with 0.09% (w/v) sodium azide and 2% sucrose. <i>Note that this product is shipped as lyophilized powder to China customers.</i>
Purification:	Affinity Purified
Conjugation:	Unconjugated
Storage:	Store at -20°C as received.
Stability:	Stable for 12 months from date of receipt.
Predicted Protein Size:	63 kDa
Gene Name:	methyltransferase like 16
Database Link:	NP_076991 Entrez Gene 79066 Human Q86W50
Background:	Probable methyltransferase.
Synonyms:	METT10D
Note:	Immunogen Sequence Homology: Dog: 100%; Pig: 100%; Rat: 100%; Horse: 100%; Human: 100%; Mouse: 100%; Bovine: 100%; Rabbit: 100%; Guinea pig: 100%; Zebrafish: 79%



[View online »](#)

Product images:

Host: Rabbit

Target Name: METTL16

Sample Tissue: Esophagus Tumor Lysate

Antibody Dilution: 1.0 µg/ml

Host: Rabbit; Target Name: METTL16; Sample
Tissue: Esophagus Tumor lysates; Antibody
Dilution: 1.0 ug/ml