

## Product datasheet for **TA342470**

### HOMEZ Rabbit Polyclonal Antibody

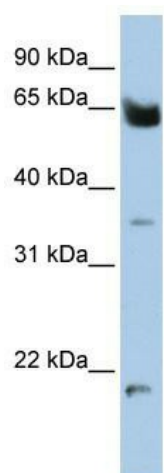
#### Product data:

Product Type:	Primary Antibodies
Applications:	WB
Recommended Dilution:	WB
Reactivity:	Human
Host:	Rabbit
Isotype:	IgG
Clonality:	Polyclonal
Immunogen:	The immunogen for anti-HOMEZ antibody: synthetic peptide directed towards the N terminal of human HOMEZ. Synthetic peptide located within the following region: KTFSYFPYPSLADIALLLCLRYGLQMEKVKTFMAQRLRCGISWSSEEIEE
Formulation:	Liquid. Purified antibody supplied in 1x PBS buffer with 0.09% (w/v) sodium azide and 2% sucrose.
Conjugation:	Unconjugated
Storage:	Store at -20°C as received.
Stability:	Stable for 12 months from date of receipt.
Predicted Protein Size:	61 kDa
Gene Name:	homeobox and leucine zipper encoding
Database Link:	<a href="#">NP_065885</a> <a href="#">Entrez Gene 57594 Human</a> <a href="#">Q8IX15</a>
Background:	May function as a transcriptional regulator.
Synonyms:	KIAA1443
Note:	Immunogen Sequence Homology: Dog: 100%; Pig: 100%; Rat: 100%; Human: 100%; Mouse: 100%; Bovine: 100%; Rabbit: 100%; Guinea pig: 100%; Horse: 93%
Protein Families:	Transcription Factors



[View online »](#)

## Product images:



WB Suggested Anti-HOMEZ Antibody Titration:  
0.2-1 ug/ml; ELISA Titer: 1: 1562500; Positive  
Control: 721\_B cell lysate