

Product datasheet for **TA342469**

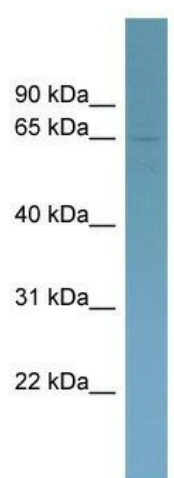
HOMEZ Rabbit Polyclonal Antibody

Product data:

Product Type:	Primary Antibodies
Applications:	WB
Recommended Dilution:	WB
Reactivity:	Human
Host:	Rabbit
Isotype:	IgG
Clonality:	Polyclonal
Immunogen:	The immunogen for anti-HOMEZ antibody: synthetic peptide directed towards the middle region of human HOMEZ. Synthetic peptide located within the following region: QDPAIPTPPPSTRSLNERAETPPLPIPPPPDIQPLERYWAAHQQLRETD
Formulation:	Liquid. Purified antibody supplied in 1x PBS buffer with 0.09% (w/v) sodium azide and 2% sucrose. <i>Note that this product is shipped as lyophilized powder to China customers.</i>
Conjugation:	Unconjugated
Storage:	Store at -20°C as received.
Stability:	Stable for 12 months from date of receipt.
Predicted Protein Size:	61 kDa
Gene Name:	homeobox and leucine zipper encoding
Database Link:	NP_065885 Entrez Gene 57594 Human Q8IX15
Background:	May function as a transcriptional regulator.
Synonyms:	KIAA1443
Note:	Immunogen Sequence Homology: Human: 100%; Dog: 93%; Bovine: 93%; Rabbit: 93%; Pig: 86%
Protein Families:	Transcription Factors



[View online »](#)

Product images:

WB Suggested Anti-HOMEZ Antibody Titration:
0.2-1 ug/ml; Positive Control: ACHN cell lysate