

Product datasheet for **TA342468**

Exportin 5 (XPO5) Rabbit Polyclonal Antibody

Product data:

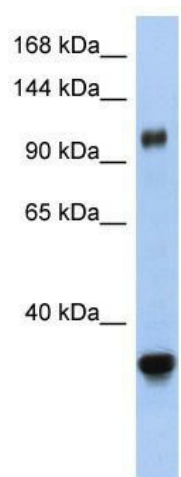
Product Type:	Primary Antibodies
Applications:	WB
Recommended Dilution:	WB
Reactivity:	Human
Host:	Rabbit
Isotype:	IgG
Clonality:	Polyclonal
Immunogen:	The immunogen for anti-XPO5 antibody: synthetic peptide directed towards the middle region of human XPO5. Synthetic peptide located within the following region: MEQIPEIQKDSLQDFCKLLNPSLQKVADKRRKDQFKRLIAGCIGKPLGE
Formulation:	Liquid. Purified antibody supplied in 1x PBS buffer with 0.09% (w/v) sodium azide and 2% sucrose. <i>Note that this product is shipped as lyophilized powder to China customers.</i>
Conjugation:	Unconjugated
Storage:	Store at -20°C as received.
Stability:	Stable for 12 months from date of receipt.
Predicted Protein Size:	136 kDa
Gene Name:	exportin 5
Database Link:	NP_065801 Entrez Gene 57510 Human Q9HAV4
Background:	This gene encodes a member of the karyopherin family that is required for the transport of small RNAs and double-stranded RNA-binding proteins from the nucleus to the cytoplasm. The encoded protein translocates cargo through the nuclear pore complex in a RanGTP-dependent process. [provided by RefSeq, Aug 2011]
Synonyms:	exp5
Note:	Immunogen Sequence Homology: Pig: 100%; Horse: 100%; Human: 100%; Rabbit: 100%; Guinea pig: 100%; Dog: 93%; Bovine: 93%; Rat: 86%; Mouse: 86%



[View online »](#)

Protein Families: Druggable Genome

Product images:



WB Suggested Anti-XPO5 Antibody Titration: 0.2-1 ug/ml; ELISA Titer: 1: 62500; Positive Control: Human Small Intestine