

## Product datasheet for **TA342466**

### MTA3 Rabbit Polyclonal Antibody

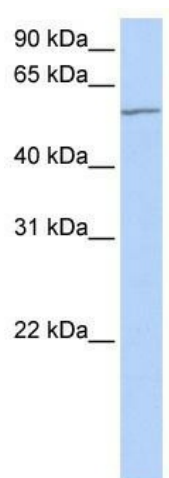
#### Product data:

Product Type:	Primary Antibodies
Applications:	WB
Recommended Dilution:	WB
Reactivity:	Human
Host:	Rabbit
Isotype:	IgG
Clonality:	Polyclonal
Immunogen:	The immunogen for anti-MTA3 antibody: synthetic peptide directed towards the C terminal of human MTA3. Synthetic peptide located within the following region: TTEDPRVRSVSRQAMQGMPVRNTGSPKSAVKTRQAFFLHTTYFTKFARQ
Formulation:	Liquid. Purified antibody supplied in 1x PBS buffer with 0.09% (w/v) sodium azide and 2% sucrose. <i>Note that this product is shipped as lyophilized powder to China customers.</i>
Conjugation:	Unconjugated
Storage:	Store at -20°C as received.
Stability:	Stable for 12 months from date of receipt.
Predicted Protein Size:	59 kDa
Gene Name:	metastasis associated 1 family member 3
Database Link:	<a href="#">NP_065795</a> <a href="#">Entrez Gene 57504 Human</a> <a href="#">Q9BTC8</a>
Background:	MTA3 plays a role in maintenance of the normal epithelial architecture through the repression of SNAI1 transcription in a histone deacetylase-dependent manner, and thus the regulation of E-cadherin levels.
Synonyms:	KIAA1266
Note:	Immunogen Sequence Homology: Dog: 100%; Pig: 100%; Rat: 100%; Horse: 100%; Human: 100%; Mouse: 100%; Bovine: 100%; Rabbit: 100%; Guinea pig: 100%; Zebrafish: 79%
Protein Families:	Transcription Factors



[View online »](#)

## Product images:



WB Suggested Anti-MTA3 Antibody Titration: 0.2-1 ug/ml; ELISA Titer: 1: 62500; Positive Control: Hela cell lysate