

Product datasheet for **TA342465**

SEPNI (SELENON) Rabbit Polyclonal Antibody

Product data:

Product Type:	Primary Antibodies
Applications:	WB
Recommended Dilution:	WB, IHC
Reactivity:	Mouse
Host:	Rabbit
Isotype:	IgG
Clonality:	Polyclonal
Immunogen:	The immunogen for anti-Sepn1 antibody: synthetic peptide corresponding to a region of Mouse. Synthetic peptide located within the following region: VHHINANYFLDITSMKPEDMENNNVFSFSSSFEDPSTATYMQFLREGLRR
Formulation:	Liquid. Purified antibody supplied in 1x PBS buffer with 0.09% (w/v) sodium azide and 2% sucrose. <i>Note that this product is shipped as lyophilized powder to China customers.</i>
Conjugation:	Unconjugated
Storage:	Store at -20°C as received.
Stability:	Stable for 12 months from date of receipt.
Predicted Protein Size:	62 kDa
Gene Name:	selenoprotein N, 1
Database Link:	NP_996809 Entrez Gene 74777 Mouse Q9NZV5
Background:	This gene encodes a selenoprotein, which contains a selenocysteine (Sec) residue at its active site. The selenocysteine is encoded by the UGA codon that normally signals translation termination. The 3' UTR of selenoprotein genes have a common stem-loop structure, the sec insertion sequence (SECIS), that is necessary for the recognition of UGA as a Sec codon rather than as a stop signal. The function of this gene in mouse is not known, however, mutations in the homologous gene in human are associated with multimimicore disease and rigid spine muscular dystrophy. [provided by RefSeq, Jul 2008]



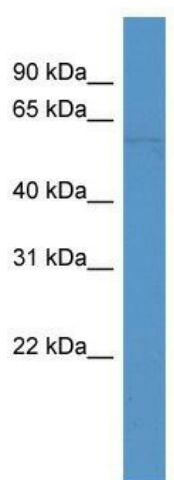
[View online »](#)

Synonyms: CFTD; MDRS1; RSMD1; RSS; SELN

Note: Immunogen Sequence Homology: Human: 100%; Pig: 86%; Rat: 86%; Horse: 86%; Mouse: 86%; Bovine: 86%; Guinea pig: 86%

Protein Families: Druggable Genome

Product images:



WB Suggested Anti-Sepn1 Antibody Titration: 1 ug/ml; Positive Control: Mouse Heart lysate