

Product datasheet for **TA342464**

SEPN1 (SELENON) Rabbit Polyclonal Antibody

Product data:

Product Type:	Primary Antibodies
Applications:	WB
Recommended Dilution:	WB
Reactivity:	Human
Host:	Rabbit
Isotype:	IgG
Clonality:	Polyclonal
Immunogen:	The immunogen for anti-SEPN1 antibody: synthetic peptide directed towards the C terminal of human SEPN1. Synthetic peptide located within the following region: NYFLDITSVKPEEIESNLFSFSSTFEDPSTATYMQFLKEGLRRGLPLLQP
Formulation:	Liquid. Purified antibody supplied in 1x PBS buffer with 0.09% (w/v) sodium azide and 2% sucrose. <i>Note that this product is shipped as lyophilized powder to China customers.</i>
Conjugation:	Unconjugated
Storage:	Store at -20°C as received.
Stability:	Stable for 12 months from date of receipt.
Predicted Protein Size:	58 kDa
Gene Name:	selenoprotein N, 1
Database Link:	NP_996809 Entrez Gene 57190 Human Q9NZV5
Background:	This gene encodes a selenoprotein, which contains a selenocysteine (Sec) residue at its active site. The selenocysteine is encoded by the UGA codon that normally signals translation termination. The 3' UTR of selenoprotein genes have a common stem-loop structure, the sec insertion sequence (SECIS), that is necessary for the recognition of UGA as a Sec codon rather than as a stop signal. Mutations in this gene cause the classical phenotype of multimimicore disease and congenital muscular dystrophy with spinal rigidity and restrictive respiratory syndrome. Two alternatively spliced transcript variants encoding distinct isoforms have been found for this gene. [provided by RefSeq, Jul 2008]



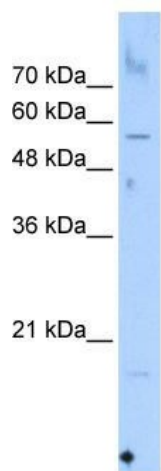
[View online »](#)

Synonyms: CFTD; MDRS1; RSMD1; RSS; SELN

Note: Immunogen Sequence Homology: Horse: 100%; Human: 100%; Bovine: 100%; Pig: 93%; Rat: 93%; Mouse: 93%; Guinea pig: 86%

Protein Families: Druggable Genome

Product images:



WB Suggested Anti-SEPN1 Antibody Titration: 0.2-1 ug/ml; Positive Control: HepG2 cell lysate