

## Product datasheet for **TA342460**

### MAML3 Rabbit Polyclonal Antibody

#### Product data:

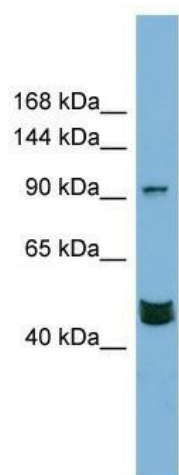
Product Type:	Primary Antibodies
Applications:	WB
Recommended Dilution:	WB
Reactivity:	Human
Host:	Rabbit
Isotype:	IgG
Clonality:	Polyclonal
Immunogen:	The immunogen for anti-MAML3 antibody: synthetic peptide directed towards the middle region of human MAML3. Synthetic peptide located within the following region: YPVQQVNQFQGSPQDIAAVRSQAALQSMRTSRLMAQNAGMMGIGPSQNP
Formulation:	Liquid. Purified antibody supplied in 1x PBS buffer with 0.09% (w/v) sodium azide and 2% sucrose. <i>Note that this product is shipped as lyophilized powder to China customers.</i>
Conjugation:	Unconjugated
Storage:	Store at -20°C as received.
Stability:	Stable for 12 months from date of receipt.
Predicted Protein Size:	122 kDa
Gene Name:	mastermind like transcriptional coactivator 3
Database Link:	<a href="#">NP_061187</a> <a href="#">Entrez Gene 55534 Human Q96JK9</a>
Background:	MAML3 acts as a transcriptional coactivator for NOTCH proteins. MAML3 has been shown to amplify NOTCH-induced transcription of HES1.
Synonyms:	CAGH3; ERDA3; GDN; MAM-2; MAM2; TNRC3
Note:	Immunogen Sequence Homology: Dog: 100%; Pig: 100%; Rat: 100%; Horse: 100%; Human: 100%; Mouse: 100%; Rabbit: 100%; Guinea pig: 100%; Bovine: 93%
Protein Families:	Transcription Factors



[View online »](#)

Protein Pathways: Notch signaling pathway

**Product images:**



WB Suggested Anti-MAML3 Antibody Titration:  
0.2-1 ug/ml; Positive Control: PANC1 cell lysate