

## Product datasheet for TA342457

### PAXBP1 Rabbit Polyclonal Antibody

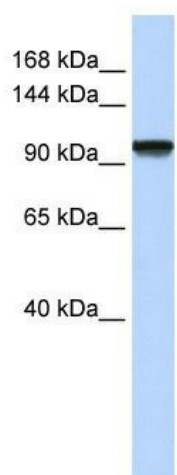
#### Product data:

Product Type:	Primary Antibodies
Applications:	WB
Recommended Dilution:	WB
Reactivity:	Human
Host:	Rabbit
Isotype:	IgG
Clonality:	Polyclonal
Immunogen:	The immunogen for anti-C21orf66 antibody: synthetic peptide directed towards the N terminal of human C21orf66. Synthetic peptide located within the following region: PGEIPDAAFIHAARKKRQMARELGDFTPHDNEPGKGRVREDENDASDDE
Formulation:	Liquid. Purified antibody supplied in 1x PBS buffer with 0.09% (w/v) sodium azide and 2% sucrose. <i>Note that this product is shipped as lyophilized powder to China customers.</i>
Conjugation:	Unconjugated
Storage:	Store at -20°C as received.
Stability:	Stable for 12 months from date of receipt.
Predicted Protein Size:	93 kDa
Gene Name:	PAX3 and PAX7 binding protein 1
Database Link:	<a href="#">NP_037461</a> <a href="#">Entrez Gene 94104 Human</a> <a href="#">Q9Y5B6</a>
Background:	This gene encodes a protein that may bind to GC-rich DNA sequences, which suggests its involvement in the regulation of transcription. Alternative splicing of this gene results in multiple transcript variants. [provided by RefSeq, Jun 2009]
Synonyms:	BM020; C21orf66; FSAP105; GCFC; GCFC1
Note:	Immunogen Sequence Homology: Dog: 100%; Pig: 100%; Rat: 100%; Horse: 100%; Human: 100%; Mouse: 100%; Bovine: 100%; Rabbit: 100%; Zebrafish: 100%; Guinea pig: 100%
Protein Families:	Transcription Factors



[View online »](#)

## Product images:



WB Suggested Anti-C21orf66 Antibody Titration:  
0.2-1 ug/ml; ELISA Titer: 1: 62500; Positive  
Control: Human Muscle