

Product datasheet for **TA342456**

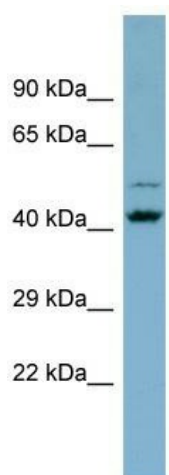
ZNF506 Rabbit Polyclonal Antibody

Product data:

| | |
|-------------------------|--|
| Product Type: | Primary Antibodies |
| Applications: | WB |
| Recommended Dilution: | WB |
| Reactivity: | Human |
| Host: | Rabbit |
| Isotype: | IgG |
| Clonality: | Polyclonal |
| Immunogen: | The immunogen for anti-ZNF506 antibody is: synthetic peptide directed towards the C-terminal region of Human ZNF506. Synthetic peptide located within the following region: HTGEKPYKCEECGKAFTAFSTLTEHKIIHTGEKPYKCEECGKAFNWSSAL |
| Formulation: | Liquid. Purified antibody supplied in 1x PBS buffer with 0.09% (w/v) sodium azide and 2% sucrose. |
| Purification: | Affinity Purified |
| Conjugation: | Unconjugated |
| Storage: | Store at -20°C as received. |
| Stability: | Stable for 12 months from date of receipt. |
| Predicted Protein Size: | 45 kDa |
| Gene Name: | zinc finger protein 506 |
| Database Link: | NP_001138876 Entrez Gene 440515 Human Q5JVG8 |
| Background: | May be involved in transcriptional regulation. |
| Synonyms: | DKFZp761G1812; MGC27136 |
| Note: | Immunogen Sequence Homology: Human: 100%; Dog: 86%; Pig: 86%; Rat: 86%; Horse: 86%; Mouse: 86%; Bovine: 86%; Zebrafish: 79% |



[View online »](#)

Product images:

Host: Rabbit; Target Name: ZNF506; Sample
Tissue: THP-1 whole cell lysates; Antibody
Dilution: 1.0 ug/ml