

## Product datasheet for TA342452

### CUX2 Rabbit Polyclonal Antibody

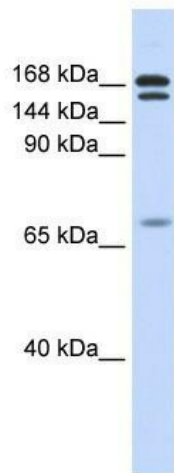
#### Product data:

Product Type:	Primary Antibodies
Applications:	WB
Recommended Dilution:	WB
Reactivity:	Human
Host:	Rabbit
Isotype:	IgG
Clonality:	Polyclonal
Immunogen:	The immunogen for anti-CUX2 antibody: synthetic peptide directed towards the N terminal of human CUX2. Synthetic peptide located within the following region: SLGTEQSYSPQQLPPPPGPEPLSPSPGQPLLGPSLGPDGTRTFSLSPF
Formulation:	Liquid. Purified antibody supplied in 1x PBS buffer with 0.09% (w/v) sodium azide and 2% sucrose. <i>Note that this product is shipped as lyophilized powder to China customers.</i>
Conjugation:	Unconjugated
Storage:	Store at -20°C as received.
Stability:	Stable for 12 months from date of receipt.
Predicted Protein Size:	162 kDa
Gene Name:	cut like homeobox 2
Database Link:	<a href="#">NP_056082</a> <a href="#">Entrez Gene 23316 Human O14529</a>
Background:	This gene encodes a protein which contains three CUT domains and a homeodomain; both domains are DNA-binding motifs. A similar gene, whose gene product possesses different DNA-binding activities, is located on chromosome on chromosome 7. Two pseudogenes of this gene have been identified on chromosomes 10 and 4. [provided by RefSeq, Jan 2013]
Synonyms:	CDP2; CUTL2
Note:	Immunogen Sequence Homology: Dog: 100%; Pig: 100%; Human: 100%; Bovine: 100%; Guinea pig: 100%; Rat: 93%; Mouse: 93%; Rabbit: 93%

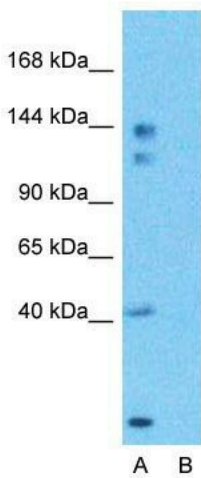


[View online »](#)

Product images:



WB Suggested Anti-CUX2 Antibody Titration: 0.2-1 ug/ml; ELISA Titer: 1: 62500; Positive Control: Human Muscle



**Anti-CUX2 Western Blot & Peptide Block Validation**

Lysate: Fetal Muscle

Lane A: Primary Antibody  
Lane B: Primary Antibody + Blocking Peptide

Primary Antibody Concentration: 1.0µg/ml  
Peptide Concentration: 5.0µg/ml  
Lysate Quantity: 25µg/lane  
Gel Concentration: 12%

Host: Rabbit; Target Name: CUX2; Sample Tissue: Fetal Muscle; Lane A: Primary Antibody; Lane B: Primary Antibody + Blocking Peptide; Primary Antibody Concentration: 1 ug/ml; Peptide Concentration: 5 ug/ml; Lysate Quantity: 25 ug/lane/Lane; Gel Concentration: 12%