

Product datasheet for **TA342451**

CUX2 Rabbit Polyclonal Antibody

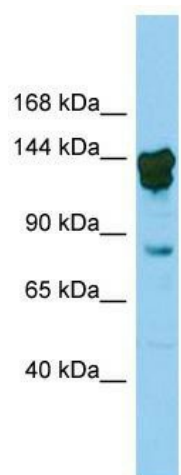
Product data:

Product Type:	Primary Antibodies
Applications:	WB
Recommended Dilution:	WB
Reactivity:	Mouse
Host:	Rabbit
Isotype:	IgG
Clonality:	Polyclonal
Immunogen:	The immunogen for anti-Cux2 antibody is: synthetic peptide directed towards the N-terminal region of Mouse Cux2. Synthetic peptide located within the following region: LQEVHITLAARLGAEAEKIKVLHSALKATQTELELRRKYDEEAASKADE
Formulation:	Liquid. Purified antibody supplied in 1x PBS buffer with 0.09% (w/v) sodium azide and 2% sucrose. <i>Note that this product is shipped as lyophilized powder to China customers.</i>
Conjugation:	Unconjugated
Storage:	Store at -20°C as received.
Stability:	Stable for 12 months from date of receipt.
Predicted Protein Size:	155 kDa
Gene Name:	cut like homeobox 2
Database Link:	NP_056082 Entrez Gene 13048 Mouse O14529
Background:	May be a transcription factor involved in neural specification. Binds to DNA in a sequence-specific manner.
Synonyms:	CDP2; CUTL2
Note:	Immunogen Sequence Homology: Dog: 100%; Pig: 100%; Rat: 100%; Human: 100%; Mouse: 100%; Bovine: 100%; Rabbit: 100%; Guinea pig: 100%



[View online »](#)

Product images:



Host: Rabbit; Target Name: Cux2; Sample Tissue: Mouse Testis lysates; Antibody Dilution: 0.25 ug/ml