

## Product datasheet for **TA342450**

### Transcription factor 25 (TCF25) Rabbit Polyclonal Antibody

#### Product data:

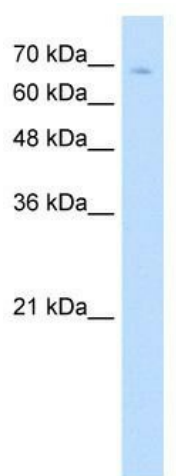
Product Type:	Primary Antibodies
Applications:	WB
Recommended Dilution:	WB
Reactivity:	Human
Host:	Rabbit
Isotype:	IgG
Clonality:	Polyclonal
Immunogen:	The immunogen for anti-TCF25 antibody: synthetic peptide directed towards the N terminal of human TCF25. Synthetic peptide located within the following region: SGKLRKKKKKQKNKKSSTGEASENGLEDIDRILERIEDSTGLNRPGPAPL
Formulation:	Liquid. Purified antibody supplied in 1x PBS buffer with 0.09% (w/v) sodium azide and 2% sucrose. <i>Note that this product is shipped as lyophilized powder to China customers.</i>
Conjugation:	Unconjugated
Storage:	Store at -20°C as received.
Stability:	Stable for 12 months from date of receipt.
Predicted Protein Size:	77 kDa
Gene Name:	transcription factor 25
Database Link:	<a href="#">NP_055787</a> <a href="#">Entrez Gene 22980 Human Q9BQ70</a>
Background:	TCF25 is a member of the basic helix-loop-helix (bHLH) family of transcription factors that are important in embryonic development (Steen and Lindholm, 2008 [PubMed 18068114]). [supplied by OMIM, Sep 2008]. ##Evidence-Data-START## Transcript exon combination :: BC011884.2, DQ321703.1 [ECO:0000332] RNAseq introns :: single sample supports all introns ERS025081, ERS025082 [ECO:0000348] ##Evidence-Data-END## COMPLETENESS: complete on the 3' end.
Synonyms:	FKSG26; hKIAA1049; Hulp1; NULP1; PRO2620



[View online »](#)

**Note:** Immunogen Sequence Homology: Dog: 100%; Pig: 100%; Rat: 100%; Horse: 100%; Human: 100%; Mouse: 100%; Bovine: 100%; Rabbit: 100%; Guinea pig: 100%; Yeast: 82%

**Product images:**



WB Suggested Anti-TCF25 Antibody Titration: 5.0 ug/ml; Positive Control: Jurkat cell lysate