

Product datasheet for **TA342446**

PSMC3IP Rabbit Polyclonal Antibody

Product data:

Product Type:	Primary Antibodies
Applications:	WB
Recommended Dilution:	WB
Reactivity:	Human
Host:	Rabbit
Isotype:	IgG
Clonality:	Polyclonal
Immunogen:	The immunogen for anti-PSMC3IP antibody: synthetic peptide directed towards the C terminal of human PSMC3IP. Synthetic peptide located within the following region: PEEKEQVYRERQKYCKEWRKRKRMATELSDAILEGYPKSKKQFFEEVGIE
Formulation:	Liquid. Purified antibody supplied in 1x PBS buffer with 0.09% (w/v) sodium azide and 2% sucrose. <i>Note that this product is shipped as lyophilized powder to China customers.</i>
Conjugation:	Unconjugated
Storage:	Store at -20°C as received.
Stability:	Stable for 12 months from date of receipt.
Predicted Protein Size:	24 kDa
Gene Name:	PSMC3 interacting protein
Database Link:	NP_037422 Entrez Gene 29893 Human Q9P2W1
Background:	This gene encodes a protein that functions in meiotic recombination. It is a subunit of the PSMC3IP/MND1 complex, which interacts with PSMC3/TBP1 to stimulate DMC1- and RAD51-mediated strand exchange during meiosis. The protein encoded by this gene can also co-activate ligand-driven transcription mediated by estrogen, androgen, glucocorticoid, progesterone, and thyroid nuclear receptors. Mutations in this gene cause XX female gonadal dysgenesis. Alternative splicing of this gene results in multiple transcript variants. [provided by RefSeq, Dec 2011]



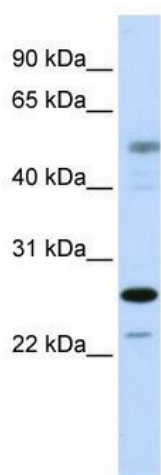
[View online »](#)

Synonyms: GT198; HOP2; HUMGT198A; ODG3; TBPIP

Note: Immunogen Sequence Homology: Dog: 100%; Rat: 100%; Horse: 100%; Human: 100%; Mouse: 100%; Bovine: 100%; Rabbit: 100%; Pig: 93%; Goat: 93%; Zebrafish: 85%; Guinea pig: 79%

Protein Families: Druggable Genome

Product images:



WB Suggested Anti-PSMC3IP Antibody Titration: 0.2-1 ug/ml; ELISA Titer: 1: 1562500; Positive Control: 721_B cell lysate. PSMC3IP is strongly supported by BioGPS gene expression data to be expressed in Human 721_B cells