

Product datasheet for **TA342444**

SEN1 (MORF4) Rabbit Polyclonal Antibody

Product data:

Product Type:	Primary Antibodies
Applications:	WB
Recommended Dilution:	WB
Reactivity:	Human
Host:	Rabbit
Isotype:	IgG
Clonality:	Polyclonal
Immunogen:	The immunogen for anti-MORF4 antibody: synthetic peptide directed towards the middle region of human MORF4. Synthetic peptide located within the following region: LAYTPLNEKSLALLLNLYLHDFLKYLAKN SATLFSASDYEV ALPEYHRKAV
Formulation:	Liquid. Purified antibody supplied in 1x PBS buffer with 0.09% (w/v) sodium azide and 2% sucrose. <i>Note that this product is shipped as lyophilized powder to China customers.</i>
Conjugation:	Unconjugated
Storage:	Store at -20°C as received.
Stability:	Stable for 12 months from date of receipt.
Predicted Protein Size:	27 kDa
Gene Name:	mortality factor 4 (pseudogene)
Database Link:	NP_006783 Entrez Gene 10934 Human



[View online »](#)

Background:

Cellular senescence, the terminal nondividing state that normal cells enter following completion of their proliferative potential, is the dominant phenotype in hybrids of normal and immortal cells. Fusions of immortal human cell lines with each other have led to their assignment to 1 of several complementation groups. MORF4 is a gene on chromosome 4 that induces a senescent-like phenotype in cell lines assigned to complementation group B. Cellular senescence, the terminal nondividing state that normal cells enter following completion of their proliferative potential, is the dominant phenotype in hybrids of normal and immortal cells. Fusions of immortal human cell lines with each other have led to their assignment to 1 of several complementation groups. MORF4 is a gene on chromosome 4 that induces a senescent-like phenotype in cell lines assigned to complementation group B. [supplied by OMIM]

Synonyms:

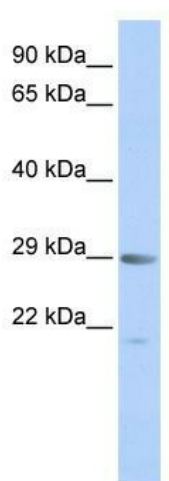
1; cellular; CSR; CSRB; mortality factor 4; SEN; SEN1; senescence (cellular)-related 1; senescence-related

Note:

Immunogen Sequence Homology: Dog: 93%; Pig: 93%; Rat: 93%; Horse: 93%; Human: 93%; Mouse: 93%; Bovine: 93%; Rabbit: 93%; Zebrafish: 93%; Guinea pig: 93%

Protein Families:

Transcription Factors

Product images:

WB Suggested Anti-MORF4 Antibody Titration:
0.2-1 ug/ml; ELISA Titer: 1: 312500; Positive
Control: Human Muscle