

## Product datasheet for **TA342442**

### zinc finger protein 138 (ZNF138) Rabbit Polyclonal Antibody

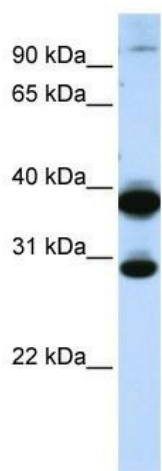
#### Product data:

Product Type:	Primary Antibodies
Applications:	WB
Recommended Dilution:	WB
Reactivity:	Human
Host:	Rabbit
Isotype:	IgG
Clonality:	Polyclonal
Immunogen:	The immunogen for anti-ZNF138 antibody: synthetic peptide directed towards the C terminal of human ZNF138. Synthetic peptide located within the following region: IHTEEKPYKCEQCCKVFKQSPTLTKHQIITYTGEEPYKCEECGKAFNLS
Formulation:	Liquid. Purified antibody supplied in 1x PBS buffer with 0.09% (w/v) sodium azide and 2% sucrose. <i>Note that this product is shipped as lyophilized powder to China customers.</i>
Conjugation:	Unconjugated
Storage:	Store at -20°C as received.
Stability:	Stable for 12 months from date of receipt.
Predicted Protein Size:	31 kDa
Gene Name:	zinc finger protein 138
Database Link:	<a href="#">NP_006515</a> <a href="#">Entrez Gene 7697 Human P52744</a>
Background:	May be involved in transcriptional regulation as a repressor.
Synonyms:	pHZ-32
Note:	Immunogen Sequence Homology: Human: 100%; Rat: 77%
Protein Families:	Transcription Factors



[View online »](#)

## Product images:



WB Suggested Anti-ZNF138 Antibody Titration:  
0.2-1 ug/ml; ELISA Titer: 1: 1562500; Positive  
Control: Human Muscle