

Product datasheet for **TA342441**

zinc finger protein 138 (ZNF138) Rabbit Polyclonal Antibody

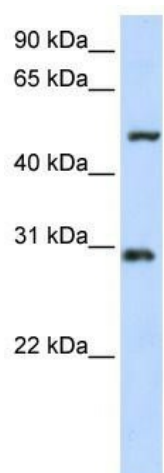
Product data:

| | |
|-------------------------|---|
| Product Type: | Primary Antibodies |
| Applications: | WB |
| Recommended Dilution: | WB |
| Reactivity: | Human |
| Host: | Rabbit |
| Isotype: | IgG |
| Clonality: | Polyclonal |
| Immunogen: | The immunogen for anti-ZNF138 antibody: synthetic peptide directed towards the N terminal of human ZNF138. Synthetic peptide located within the following region: KRHEMVVAKHSALCSRFAQDLWLEQNIKDSFQKVTLSRYGKYGHKNLQLR |
| Formulation: | Liquid. Purified antibody supplied in 1x PBS buffer with 0.09% (w/v) sodium azide and 2% sucrose. <i>Note that this product is shipped as lyophilized powder to China customers.</i> |
| Conjugation: | Unconjugated |
| Storage: | Store at -20°C as received. |
| Stability: | Stable for 12 months from date of receipt. |
| Predicted Protein Size: | 31 kDa |
| Gene Name: | zinc finger protein 138 |
| Database Link: | NP_006515 Entrez Gene 7697 Human P52744 |
| Background: | May be involved in transcriptional regulation as a repressor. |
| Synonyms: | pHZ-32 |
| Note: | Immunogen Sequence Homology: Human: 100% |
| Protein Families: | Transcription Factors |



[View online »](#)

Product images:



WB Suggested Anti-ZNF138 Antibody Titration:
0.2-1 ug/ml; ELISA Titer: 1: 62500; Positive
Control: 293T cell lysate