

Product datasheet for **TA342438**

EBP1 (PA2G4) Rabbit Polyclonal Antibody

Product data:

| | |
|-------------------------|---|
| Product Type: | Primary Antibodies |
| Applications: | IHC, WB |
| Recommended Dilution: | WB, IHC |
| Reactivity: | Human |
| Host: | Rabbit |
| Isotype: | IgG |
| Clonality: | Polyclonal |
| Immunogen: | The immunogen for anti-PA2G4 antibody: synthetic peptide directed towards the C terminal of human PA2G4. Synthetic peptide located within the following region: LLQPFNVLYEKEGEFVAQFKFTVLLMPNGPMRITSGPFEPDLYKSEMEVQ |
| Formulation: | Liquid. Purified antibody supplied in 1x PBS buffer with 0.09% (w/v) sodium azide and 2% sucrose. <i>Note that this product is shipped as lyophilized powder to China customers.</i> |
| Conjugation: | Unconjugated |
| Storage: | Store at -20°C as received. |
| Stability: | Stable for 12 months from date of receipt. |
| Predicted Protein Size: | 44 kDa |
| Gene Name: | proliferation-associated 2G4 |
| Database Link: | NP_006182 Entrez Gene 5036 Human Q9UQ80 |



[View online »](#)

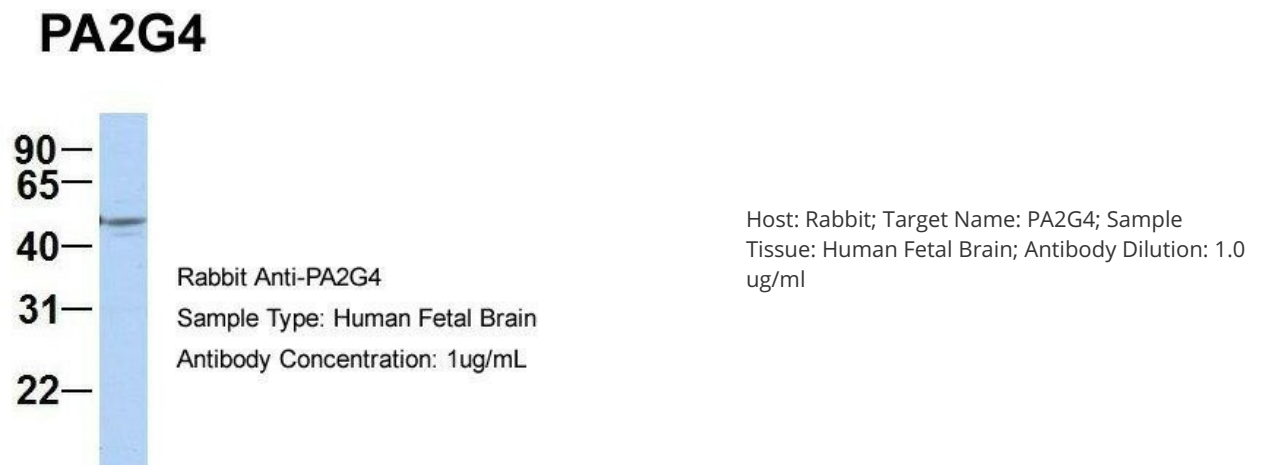
Background: This gene encodes an RNA-binding protein that is involved in growth regulation. This protein is present in pre-ribosomal ribonucleoprotein complexes and may be involved in ribosome assembly and the regulation of intermediate and late steps of rRNA processing. This protein can interact with the cytoplasmic domain of the ErbB3 receptor and may contribute to transducing growth regulatory signals. This protein is also a transcriptional co-repressor of androgen receptor-regulated genes and other cell cycle regulatory genes through its interactions with histone deacetylases. This protein has been implicated in growth inhibition and the induction of differentiation of human cancer cells. Six pseudogenes, located on chromosomes 3, 6, 9, 18, 20 and X, have been identified. [provided by RefSeq, Jul 2008]

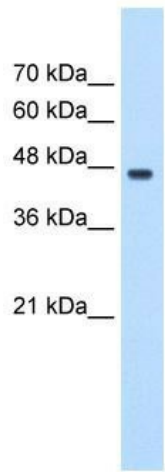
Synonyms: EBP1; HG4-1; p38-2G4

Note: Immunogen Sequence Homology: Dog: 100%; Pig: 100%; Rat: 100%; Horse: 100%; Human: 100%; Mouse: 100%; Bovine: 100%; Rabbit: 100%; Guinea pig: 100%; Zebrafish: 86%

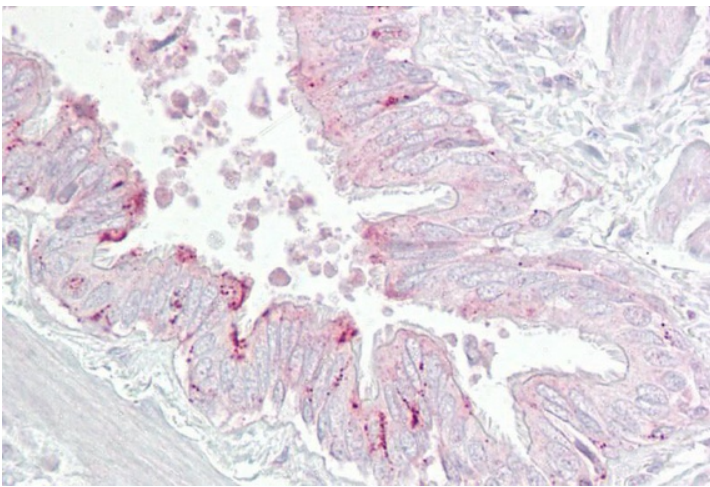
Protein Families: Druggable Genome, Protease, Stem cell - Pluripotency

Product images:

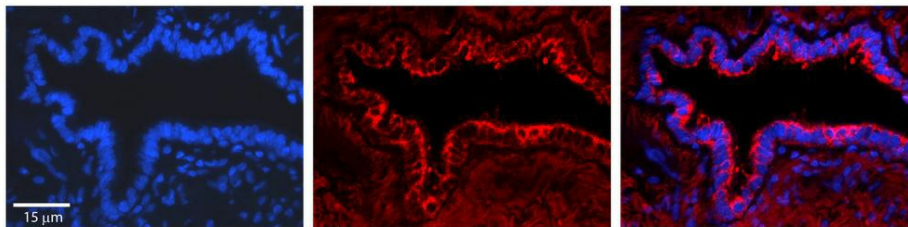




WB Suggested Anti-PA2G4 Antibody Titration: 0.2-1 ug/ml; Positive Control: HepG2 cell lysate. PA2G4 is strongly supported by BioGPS gene expression data to be expressed in Human HepG2 cells



Lung, respiratory epithelium



Rabbit Anti-PA2G4 Antibody; Formalin Fixed Paraffin Embedded Tissue: Human Bronchial Epithelial Tissue; Observed Staining: Cytoplasmic; Primary Antibody Concentration: 1: 100; Secondary Antibody: Donkey anti-Rabbit-Cy3; Secondary Antibody Concentration: 1