

Product datasheet for **TA342435**

SYBL1 (VAMP7) Rabbit Polyclonal Antibody

Product data:

Product Type:	Primary Antibodies
Applications:	WB
Recommended Dilution:	WB
Reactivity:	Human
Host:	Rabbit
Isotype:	IgG
Clonality:	Polyclonal
Immunogen:	The immunogen for anti-VAMP7 antibody: synthetic peptide directed towards the N terminal of human VAMP7. Synthetic peptide located within the following region: KIPSENNKLTYSHGNYLFHYICQDRIVYLCITDDDFERSRAFNFLNEIKK
Formulation:	Liquid. Purified antibody supplied in 1x PBS buffer with 0.09% (w/v) sodium azide and 2% sucrose. <i>Note that this product is shipped as lyophilized powder to China customers.</i>
Conjugation:	Unconjugated
Storage:	Store at -20°C as received.
Stability:	Stable for 12 months from date of receipt.
Predicted Protein Size:	25 kDa
Gene Name:	vesicle associated membrane protein 7
Database Link:	NP_005629 Entrez Gene 6845 Human P51809
Background:	This gene encodes a transmembrane protein that is a member of the soluble N-ethylmaleimide-sensitive factor attachment protein receptor (SNARE) family. The encoded protein localizes to late endosomes and lysosomes and is involved in the fusion of transport vesicles to their target membranes. Alternate splicing results in multiple transcript variants. [provided by RefSeq, Jun 2010]
Synonyms:	SYBL1; TI-VAMP; TIVAMP; VAMP-7



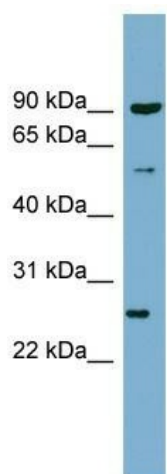
[View online »](#)

Note: Immunogen Sequence Homology: Dog: 100%; Pig: 100%; Rat: 100%; Horse: 100%; Human: 100%; Mouse: 100%; Sheep: 100%; Bovine: 100%; Rabbit: 100%; Guinea pig: 100%; Zebrafish: 92%

Protein Families: Transcription Factors, Transmembrane

Protein Pathways: SNARE interactions in vesicular transport

Product images:



WB Suggested Anti-VAMP7 Antibody Titration: 0.2-1 ug/ml; Positive Control: COLO205 cell lysate. VAMP7 is supported by BioGPS gene expression data to be expressed in COLO205