

Product datasheet for **TA342433**

SMC3 Rabbit Polyclonal Antibody

Product data:

Product Type:	Primary Antibodies
Applications:	IHC, WB
Recommended Dilution:	WB, IHC
Reactivity:	Human
Host:	Rabbit
Isotype:	IgG
Clonality:	Polyclonal
Immunogen:	The immunogen for anti-SMC3 antibody: synthetic peptide directed towards the C terminal of human SMC3. Synthetic peptide located within the following region: GKATLVMKKGDVEGSQSQDEGEGSGESERGSQSSVPSVDQFTGVGIRV
Formulation:	Liquid. Purified antibody supplied in 1x PBS buffer with 0.09% (w/v) sodium azide and 2% sucrose. <i>Note that this product is shipped as lyophilized powder to China customers.</i>
Conjugation:	Unconjugated
Storage:	Store at -20°C as received.
Stability:	Stable for 12 months from date of receipt.
Predicted Protein Size:	74 kDa
Gene Name:	structural maintenance of chromosomes 3
Database Link:	NP_005436 Entrez Gene 9126 Human Q9UQE7
Background:	This gene belongs to the SMC3 subfamily of SMC proteins. The encoded protein occurs in certain cell types as either an intracellular, nuclear protein or a secreted protein. The nuclear form, known as structural maintenance of chromosomes 3, is a component of the multimeric cohesin complex that holds together sister chromatids during mitosis, enabling proper chromosome segregation. Post-translational modification of the encoded protein by the addition of chondroitin sulfate chains gives rise to the secreted proteoglycan bamacan, an abundant basement membrane protein. [provided by RefSeq, Jul 2008]



[View online »](#)

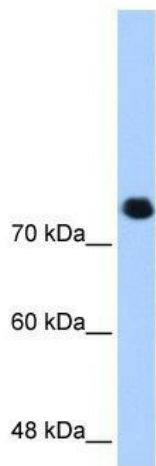
Synonyms: BAM; BMH; CDLS3; CSPG6; HCAP; SMC3L1

Note: Immunogen Sequence Homology: Dog: 100%; Pig: 100%; Rat: 100%; Horse: 100%; Human: 100%; Mouse: 100%; Bovine: 100%; Rabbit: 100%; Guinea pig: 100%; Zebrafish: 86%

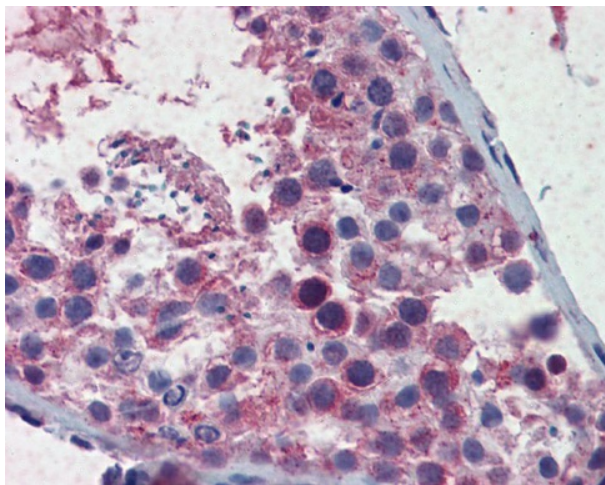
Protein Families: Druggable Genome

Protein Pathways: Cell cycle, Oocyte meiosis

Product images:



WB Suggested Anti-SMC3 Antibody Titration: 0.2-1 ug/ml; Positive Control: HepG2 cell lysate. There is BioGPS gene expression data showing that SMC3 is expressed in HepG2



Testis