

Product datasheet for TA342432

NCKAP1L Rabbit Polyclonal Antibody

Product data:

Product Type:	Primary Antibodies
Applications:	WB
Recommended Dilution:	WB
Reactivity:	Human
Host:	Rabbit
Isotype:	IgG
Clonality:	Polyclonal
Immunogen:	The immunogen for anti-NCKAP1L antibody: synthetic peptide directed towards the C terminal of human NCKAP1L. Synthetic peptide located within the following region: LPLLATDPSSFYSIEKDGYNNNIHCLTKAIIQVSAALFTLYNKNIETHLK
Formulation:	Liquid. Purified antibody supplied in 1x PBS buffer with 0.09% (w/v) sodium azide and 2% sucrose. <i>Note that this product is shipped as lyophilized powder to China customers.</i>
Conjugation:	Unconjugated
Storage:	Store at -20°C as received.
Stability:	Stable for 12 months from date of receipt.
Predicted Protein Size:	128 kDa
Gene Name:	NCK associated protein 1 like
Database Link:	NP_005328 Entrez Gene 3071 Human P55160
Background:	This gene encodes a member of the HEM family of tissue-specific transmembrane proteins which are highly conserved from invertebrates through mammals. This gene is only expressed in hematopoietic cells. The encoded protein is a part of the Scar/WAVE complex which plays an important role in regulating cell shape in both metazoans and plants. Alternatively spliced transcript variants encoding different isoforms have been found. [provided by RefSeq, May 2010]
Synonyms:	HEM1

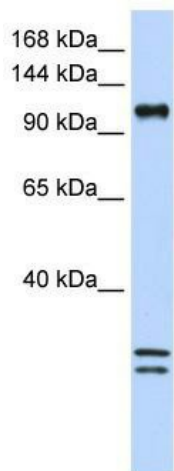


[View online »](#)

Note: Immunogen Sequence Homology: Pig: 100%; Horse: 100%; Human: 100%; Rabbit: 100%; Guinea pig: 100%; Rat: 93%; Mouse: 93%; Dog: 86%; Bovine: 85%

Protein Pathways: Regulation of actin cytoskeleton

Product images:



WB Suggested Anti-NCKAP1L Antibody Titration:
0.2-1 ug/ml; ELISA Titer: 1: 62500; Positive
Control: 293T cell lysate