

Product datasheet for **TA342428**

ZNF397 Rabbit Polyclonal Antibody

Product data:

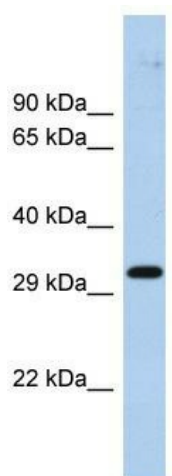
Product Type:	Primary Antibodies
Applications:	WB
Recommended Dilution:	WB
Reactivity:	Human
Host:	Rabbit
Isotype:	IgG
Clonality:	Polyclonal
Immunogen:	The immunogen for anti-ZNF397 antibody is: synthetic peptide directed towards the middle region of Human ZNF397. Synthetic peptide located within the following region: QQFRKFCYQETPGPREALSRLQELCYQWLMPELHTKEQILELLVLEQFLS
Formulation:	Liquid. Purified antibody supplied in 1x PBS buffer with 0.09% (w/v) sodium azide and 2% sucrose.
Purification:	Affinity Purified
Conjugation:	Unconjugated
Storage:	Store at -20°C as received.
Stability:	Stable for 12 months from date of receipt.
Predicted Protein Size:	30 kDa
Gene Name:	zinc finger protein 397
Database Link:	NP_115723 Entrez Gene 84307 Human Q8NF99
Background:	This gene encodes a protein with a N-terminal SCAN domain, and the longer isoform contains nine C2H2-type zinc finger repeats in the C-terminal domain. The protein localizes to centromeres during interphase and early prophase, and different isoforms can repress or activate transcription in transfection studies. Multiple transcript variants encoding different isoforms have been found for this gene. Additional variants have been described, but their biological validity has not been determined. [provided by RefSeq, Oct 2009]
Synonyms:	ZNF47; ZSCAN15


[View online »](#)

Note: Immunogen Sequence Homology: Dog: 100%; Pig: 100%; Rat: 100%; Horse: 100%; Human: 100%; Bovine: 100%; Rabbit: 100%; Guinea pig: 100%; Mouse: 93%; Goat: 83%

Protein Families: Transcription Factors

Product images:



Host: Rabbit; Target Name: ZNF397; Sample Tissue: Fetal Brain lysates; Antibody Dilution: 1.0 ug/ml