

Product datasheet for **TA342418**

DRGX Rabbit Polyclonal Antibody

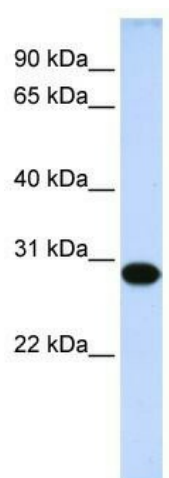
Product data:

| | |
|-------------------------|---|
| Product Type: | Primary Antibodies |
| Applications: | WB |
| Recommended Dilution: | WB |
| Reactivity: | Human |
| Host: | Rabbit |
| Isotype: | IgG |
| Clonality: | Polyclonal |
| Immunogen: | The immunogen for anti-DRGX antibody: synthetic peptide directed towards the middle region of human DRGX. Synthetic peptide located within the following region: KEPMAEVTPPPVRNINSPPPGDQARSKKEALEAQQLGRTVGPAGPFFPS |
| Formulation: | Liquid. Purified antibody supplied in 1x PBS buffer with 0.09% (w/v) sodium azide and 2% sucrose. <i>Note that this product is shipped as lyophilized powder to China customers.</i> |
| Conjugation: | Unconjugated |
| Storage: | Store at -20°C as received. |
| Stability: | Stable for 12 months from date of receipt. |
| Predicted Protein Size: | 29 kDa |
| Gene Name: | dorsal root ganglia homeobox |
| Database Link: | NP_001073989 Entrez Gene 644168 Human A6NNA5 |
| Background: | Transcription factor required for the formation of correct projections from nociceptive sensory neurons to the dorsal horn of the spinal cord and normal perception of pain. |
| Synonyms: | DRG11; PRRXL1 |
| Note: | Immunogen Sequence Homology: Dog: 100%; Pig: 100%; Horse: 100%; Human: 100%; Bovine: 100%; Rat: 93%; Mouse: 93%; Rabbit: 85%; Guinea pig: 85% |



[View online »](#)

Product images:



WB Suggested Anti-DRGX Antibody Titration: 0.2-1 ug/ml; ELISA Titer: 1: 62500; Positive Control: 721_B cell lysate