

Product datasheet for **TA342417**

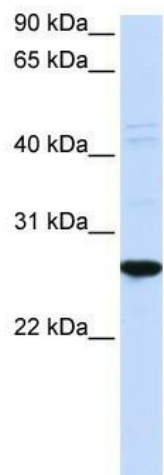
DRGX Rabbit Polyclonal Antibody

Product data:

Product Type:	Primary Antibodies
Applications:	WB
Recommended Dilution:	WB
Reactivity:	Human
Host:	Rabbit
Isotype:	IgG
Clonality:	Polyclonal
Immunogen:	The immunogen for anti-DRGX antibody: synthetic peptide directed towards the N terminal of human DRGX. Synthetic peptide located within the following region: MVLMSCDQRLISLLLVGTATFGNHSSGDFDDGFLRRKQRRNRRTTFTLQQL
Formulation:	Liquid. Purified antibody supplied in 1x PBS buffer with 0.09% (w/v) sodium azide and 2% sucrose. <i>Note that this product is shipped as lyophilized powder to China customers.</i>
Conjugation:	Unconjugated
Storage:	Store at -20°C as received.
Stability:	Stable for 12 months from date of receipt.
Predicted Protein Size:	29 kDa
Gene Name:	dorsal root ganglia homeobox
Database Link:	NP_001073989 Entrez Gene 644168 Human A6NNA5
Background:	Transcription factor required for the formation of correct projections from nociceptive sensory neurons to the dorsal horn of the spinal cord and normal perception of pain.
Synonyms:	DRG11; PRRXL1
Note:	Immunogen Sequence Homology: Human: 100%; Zebrafish: 100%; Dog: 93%; Pig: 93%; Rat: 93%; Horse: 93%; Mouse: 93%; Bovine: 93%; Rabbit: 93%; Guinea pig: 93%; Yeast: 79%



[View online »](#)

Product images:

WB Suggested Anti-DRGX Antibody Titration: 0.2-1 ug/ml; ELISA Titer: 1: 312500; Positive Control: HeLa cell lysate