

## Product datasheet for **TA342411**

### EMX1 Rabbit Polyclonal Antibody

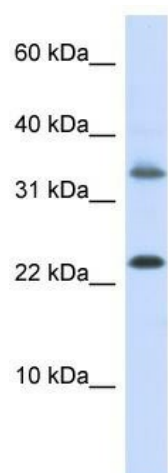
#### Product data:

Product Type:	Primary Antibodies
Applications:	WB
Recommended Dilution:	WB
Reactivity:	Human
Host:	Rabbit
Isotype:	IgG
Clonality:	Polyclonal
Immunogen:	The immunogen for anti-EMX1 antibody: synthetic peptide directed towards the middle region of human EMX1. Synthetic peptide located within the following region: DGLLLHGPFARKPKRIRTAFFSPQLLRLEFAFEKNHYVGAERKQLAGSL
Formulation:	Liquid. Purified antibody supplied in 1x PBS buffer with 0.09% (w/v) sodium azide and 2% sucrose. <i>Note that this product is shipped as lyophilized powder to China customers.</i>
Conjugation:	Unconjugated
Storage:	Store at -20°C as received.
Stability:	Stable for 12 months from date of receipt.
Predicted Protein Size:	31 kDa
Gene Name:	empty spiracles homeobox 1
Database Link:	<a href="#">NP_004088</a> <a href="#">Entrez Gene 2016 Human Q04741</a>
Background:	Transcription factor, which in cooperation with EMX2, acts to generate the boundary between the roof and archipallium in the developing brain. May function in combinations with OTX1/2 to specify cell fates in the developing central nervous system.
Synonyms:	empty spiracles homeobox 1; empty spiracles homolog 1
Note:	Immunogen Sequence Homology: Dog: 100%; Pig: 100%; Rat: 100%; Horse: 100%; Human: 100%; Mouse: 100%; Bovine: 100%; Rabbit: 100%; Guinea pig: 100%; Zebrafish: 91%
Protein Families:	Druggable Genome, ES Cell Differentiation/IPS



[View online »](#)

## Product images:



WB Suggested Anti-EMX1 Antibody Titration: 0.2-1 ug/ml; ELISA Titer: 1: 312500; Positive Control: HepG2 cell lysate