

Product datasheet for **TA342407**

Zhangfei (CREBZF) Rabbit Polyclonal Antibody

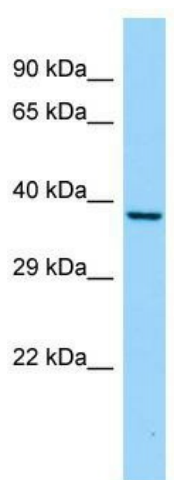
Product data:

Product Type:	Primary Antibodies
Applications:	WB
Recommended Dilution:	WB
Reactivity:	Rat
Host:	Rabbit
Isotype:	IgG
Clonality:	Polyclonal
Immunogen:	The immunogen for anti-Crebfz antibody is: synthetic peptide directed towards the C-terminal region of Rat Crebfz. Synthetic peptide located within the following region: KRVQALQEESRYLRAVLANETGLARLLSRLSGVGLRLTSLFRDSPAGDH
Formulation:	Liquid. Purified antibody supplied in 1x PBS buffer with 0.09% (w/v) sodium azide and 2% sucrose. <i>Note that this product is shipped as lyophilized powder to China customers.</i>
Conjugation:	Unconjugated
Storage:	Store at -20°C as received.
Stability:	Stable for 12 months from date of receipt.
Predicted Protein Size:	39 kDa
Gene Name:	CREB/ATF bZIP transcription factor
Database Link:	NP_001034707 Entrez Gene 293112 Rat Q9NS37
Background:	The function of this protein remains unknown.
Synonyms:	SMILE; ZF
Note:	Immunogen Sequence Homology: Dog: 100%; Pig: 100%; Rat: 100%; Human: 100%; Mouse: 100%; Bovine: 100%; Rabbit: 100%; Guinea pig: 100%
Protein Families:	Transcription Factors



[View online »](#)

Product images:



Host: Rabbit; Target Name: Crebzf; Sample
Tissue: Rat Heart lysates; Antibody Dilution: 1.0
ug/ml