

Product datasheet for **TA342406**

FOXK1 Rabbit Polyclonal Antibody

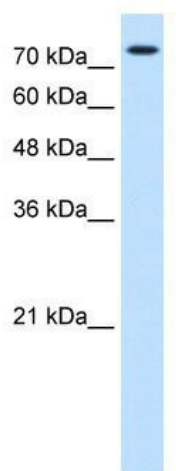
Product data:

Product Type:	Primary Antibodies
Applications:	WB
Recommended Dilution:	WB
Reactivity:	Human
Host:	Rabbit
Isotype:	IgG
Clonality:	Polyclonal
Immunogen:	The immunogen for anti-FOXK1 antibody: synthetic peptide directed towards the middle region of human FOXK1. Synthetic peptide located within the following region: TSDLQLAAEFAAKAASEQQADTSGGDSPKDESKPPFSYAQLIVQAISSAQ
Formulation:	Liquid. Purified antibody supplied in 1x PBS buffer with 0.09% (w/v) sodium azide and 2% sucrose. <i>Note that this product is shipped as lyophilized powder to China customers.</i>
Conjugation:	Unconjugated
Storage:	Store at -20°C as received.
Stability:	Stable for 12 months from date of receipt.
Predicted Protein Size:	75 kDa
Gene Name:	forkhead box K1
Database Link:	NP_001032242 Entrez Gene 221937 Human P85037
Background:	FOXK1 is a transcriptional regulator that binds to the upstream enhancer region (CCAC box) of myoglobin gene. It has a role in myogenic differentiation and in remodeling processes of adult muscles that occur in response to physiological stimuli.
Synonyms:	FOXK1L
Note:	Immunogen Sequence Homology: Human: 100%; Dog: 93%; Pig: 93%; Rat: 93%; Horse: 93%; Mouse: 93%; Bovine: 93%; Rabbit: 93%; Zebrafish: 93%; Guinea pig: 93%; Yeast: 83%



[View online »](#)

Product images:



WB Suggested Anti-FOXK1 Antibody Titration: 0.2-1 ug/ml; Positive Control: HepG2 cell lysate