

## Product datasheet for **TA342405**

### C9orf152 Rabbit Polyclonal Antibody

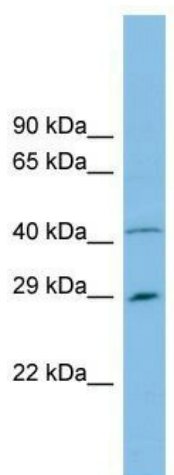
#### Product data:

Product Type:	Primary Antibodies
Applications:	WB
Recommended Dilution:	WB
Reactivity:	Human
Host:	Rabbit
Isotype:	IgG
Clonality:	Polyclonal
Immunogen:	The immunogen for anti-C9orf152 antibody: synthetic peptide directed towards the N terminal of human C9orf152. Synthetic peptide located within the following region: MEGLPCPCPALPHFWQLRSHLMAEGSRTQAPGKGPPLSIQFLRAQYEGLK
Formulation:	Liquid. Purified antibody supplied in 1x PBS buffer with 0.09% (w/v) sodium azide and 2% sucrose. <i>Note that this product is shipped as lyophilized powder to China customers.</i>
Conjugation:	Unconjugated
Storage:	Store at -20°C as received.
Stability:	Stable for 12 months from date of receipt.
Predicted Protein Size:	24 kDa
Gene Name:	chromosome 9 open reading frame 152
Database Link:	<a href="#">NP_001013011</a> <a href="#">Entrez Gene 401546 Human</a> <a href="#">Q5J TZ5</a>
Background:	The function of this protein remains unknown.
Synonyms:	bA470J20.2
Note:	Immunogen Sequence Homology: Human: 100%; Pig: 92%; Mouse: 92%



[View online »](#)

## Product images:



WB Suggested Anti-C9orf152 Antibody Titration:  
0.2-1 ug/ml; ELISA Titer: 1: 12500; Positive  
Control: THP-1 cell lysate