

Product datasheet for **TA342404**

DUXA Rabbit Polyclonal Antibody

Product data:

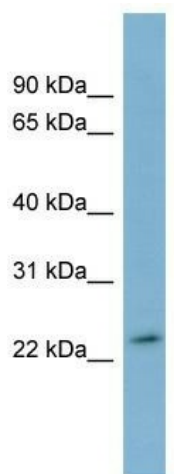
Product Type:	Primary Antibodies
Applications:	WB
Recommended Dilution:	WB
Reactivity:	Human
Host:	Rabbit
Isotype:	IgG
Clonality:	Polyclonal
Immunogen:	The immunogen for anti-DUXA antibody: synthetic peptide directed towards the middle region of human DUXA. Synthetic peptide located within the following region: SRLLLQRKREPVASLEQEEQGKIPEGLQGAEDTQNGTNFTSDSHFSGART
Formulation:	Liquid. Purified antibody supplied in 1x PBS buffer with 0.09% (w/v) sodium azide and 2% sucrose. <i>Note that this product is shipped as lyophilized powder to China customers.</i>
Conjugation:	Unconjugated
Storage:	Store at -20°C as received.
Stability:	Stable for 12 months from date of receipt.
Predicted Protein Size:	24 kDa
Gene Name:	double homeobox A
Database Link:	NP_001012747 Entrez Gene 503835 Human A6NLW8
Background:	Homeobox genes encode DNA-binding proteins, many of which are thought to be involved in early embryonic development. Homeobox genes encode a DNA-binding domain of 60 to 63 amino acids referred to as the homeodomain. This gene is a member of the DUXA homeobox gene family. Evidence of mRNA expression has not yet been found for this gene. Multiple, related processed pseudogenes have been found which are thought to reflect expression of this gene in the germ line or embryonic cells. [provided by RefSeq, Jul 2008]
Synonyms:	DUXA



[View online »](#)

Note: Immunogen Sequence Homology: Human: 100%

Product images:



WB Suggested Anti-DUXA Antibody Titration: 0.2-1 ug/ml; Positive Control: Human Stomach