

Product datasheet for **TA342402**

ARGFX Rabbit Polyclonal Antibody

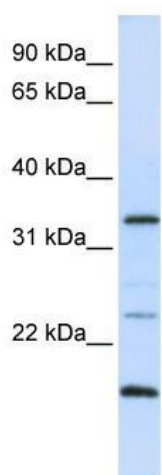
Product data:

Product Type:	Primary Antibodies
Applications:	WB
Recommended Dilution:	WB
Reactivity:	Human
Host:	Rabbit
Isotype:	IgG
Clonality:	Polyclonal
Immunogen:	The immunogen for anti-ARGFX antibody: synthetic peptide directed towards the N terminal of human ARGFX. Synthetic peptide located within the following region: TTAIRRRHKERTSFTHQQYEELEALFSQTMFPDRNLQEKLALRLDLPEST
Formulation:	Liquid. Purified antibody supplied in 1x PBS buffer with 0.09% (w/v) sodium azide and 2% sucrose. <i>Note that this product is shipped as lyophilized powder to China customers.</i>
Conjugation:	Unconjugated
Storage:	Store at -20°C as received.
Stability:	Stable for 12 months from date of receipt.
Predicted Protein Size:	35 kDa
Gene Name:	arginine-fifty homeobox
Database Link:	NP_001012677 Entrez Gene 503582 Human A6NJJG6
Background:	Homeobox genes encode DNA-binding proteins, many of which are thought to be involved in early embryonic development. Homeobox genes encode a DNA-binding domain of 60 to 63 amino acids referred to as the homeodomain. This gene is a member of the ARGFX homeobox gene family. [provided by RefSeq, Jul 2008]
Synonyms:	ARGFX
Note:	Immunogen Sequence Homology: Human: 100%; Pig: 91%; Bovine: 90%
Protein Families:	Transcription Factors



[View online »](#)

Product images:



WB Suggested Anti-ARGFX Antibody Titration: 0.2-1 ug/ml; ELISA Titer: 1: 312500; Positive Control: 293T cell lysate