

## Product datasheet for **TA342401**

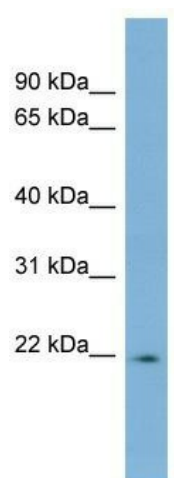
### LBX2 Rabbit Polyclonal Antibody

#### Product data:

Product Type:	Primary Antibodies
Applications:	WB
Recommended Dilution:	WB
Reactivity:	Human
Host:	Rabbit
Isotype:	IgG
Clonality:	Polyclonal
Immunogen:	The immunogen for anti-LBX2 antibody: synthetic peptide directed towards the middle region of human LBX2. Synthetic peptide located within the following region: MRADVASLRALSPEVLCSLALPEGAPDPGLCLGPAGPDSRPHLSDEEIQV
Formulation:	Liquid. Purified antibody supplied in 1x PBS buffer with 0.09% (w/v) sodium azide and 2% sucrose.
Conjugation:	Unconjugated
Storage:	Store at -20°C as received.
Stability:	Stable for 12 months from date of receipt.
Predicted Protein Size:	21 kDa
Gene Name:	ladybird homeobox 2
Database Link:	<a href="#">NP_001009812</a> <a href="#">Entrez Gene 85474 Human</a> <a href="#">Q6XYB7</a>
Background:	Putative transcription factor.
Synonyms:	LP3727
Note:	Immunogen Sequence Homology: Human: 100%; Horse: 91%; Rat: 79%; Mouse: 79%



[View online »](#)

**Product images:**

WB Suggested Anti-LBX2 Antibody Titration: 0.2-1 ug/ml; ELISA Titer: 1: 312500; Positive Control: Human Small Intestine