

Product datasheet for **TA342400**

LBX2 Rabbit Polyclonal Antibody

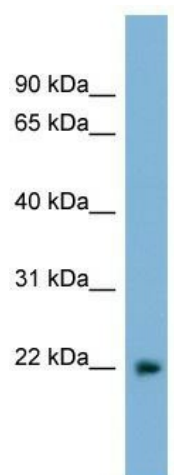
Product data:

Product Type:	Primary Antibodies
Applications:	WB
Recommended Dilution:	WB
Reactivity:	Human
Host:	Rabbit
Isotype:	IgG
Clonality:	Polyclonal
Immunogen:	The immunogen for anti-LBX2 antibody: synthetic peptide directed towards the middle region of human LBX2. Synthetic peptide located within the following region: MRADVASLRALSPEVLCSLALPEGAPDPGLCLGPAGPDSRPHLSDEEIQV
Formulation:	Liquid. Purified antibody supplied in 1x PBS buffer with 0.09% (w/v) sodium azide and 2% sucrose.
Conjugation:	Unconjugated
Storage:	Store at -20°C as received.
Stability:	Stable for 12 months from date of receipt.
Predicted Protein Size:	21 kDa
Gene Name:	ladybird homeobox 2
Database Link:	NP_001009812 Entrez Gene 85474 Human Q6XYB7
Background:	Putative transcription factor.
Synonyms:	LP3727
Note:	Immunogen Sequence Homology: Human: 100%; Pig: 75%



[View online »](#)

Product images:



WB Suggested Anti-LBX2 Antibody Titration: 0.2-1 ug/ml; ELISA Titer: 1: 312500; Positive Control: PANC1 cell lysate