

## Product datasheet for **TA342393**

### ETV3L Rabbit Polyclonal Antibody

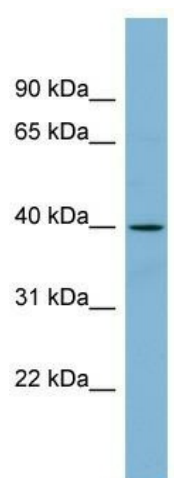
#### Product data:

Product Type:	Primary Antibodies
Applications:	WB
Recommended Dilution:	WB
Reactivity:	Human
Host:	Rabbit
Isotype:	IgG
Clonality:	Polyclonal
Immunogen:	The immunogen for anti-ETV3L antibody: synthetic peptide directed towards the middle region of human ETV3L. Synthetic peptide located within the following region: TGQQTPRGPPETSGDKKGSSSSVYRLGSAPGPCRLGLCCHLGSVQGELPG
Formulation:	Liquid. Purified antibody supplied in 1x PBS buffer with 0.09% (w/v) sodium azide and 2% sucrose.
Conjugation:	Unconjugated
Storage:	Store at -20°C as received.
Stability:	Stable for 12 months from date of receipt.
Predicted Protein Size:	40 kDa
Gene Name:	ETS variant 3 like
Database Link:	<a href="#">NP_001004341</a> <a href="#">Entrez Gene 440695 Human</a> <a href="#">Q6ZN32</a>
Background:	Transcriptional regulator.
Synonyms:	FLJ16478
Note:	Immunogen Sequence Homology: Human: 100%; Rabbit: 79%



[View online »](#)

## Product images:



WB Suggested Anti-ETV3L Antibody Titration: 0.2-1 ug/ml; ELISA Titer: 1: 62500; Positive Control: Human Spleen