

Product datasheet for **TA342391**

DBX2 Rabbit Polyclonal Antibody

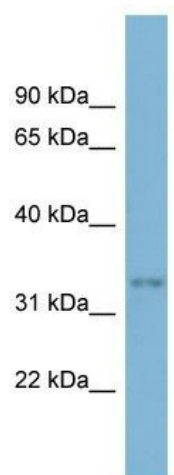
Product data:

Product Type:	Primary Antibodies
Applications:	WB
Recommended Dilution:	WB
Reactivity:	Human
Host:	Rabbit
Isotype:	IgG
Clonality:	Polyclonal
Immunogen:	The immunogen for anti-DBX2 antibody: synthetic peptide directed towards the middle region of human DBX2. Synthetic peptide located within the following region: SSPRWRENSPEPSERLIQESSGAPPPEANSLQGALYLCSEEEAGSKGVL
Formulation:	Liquid. Purified antibody supplied in 1x PBS buffer with 0.09% (w/v) sodium azide and 2% sucrose. <i>Note that this product is shipped as lyophilized powder to China customers.</i>
Conjugation:	Unconjugated
Storage:	Store at -20°C as received.
Stability:	Stable for 12 months from date of receipt.
Predicted Protein Size:	36 kDa
Gene Name:	developing brain homeobox 2
Database Link:	NP_001004329 Entrez Gene 440097 Human Q6ZNG2
Background:	The function remains unknown.
Synonyms:	FLJ16139
Note:	Immunogen Sequence Homology: Horse: 100%; Human: 100%; Bovine: 100%; Dog: 93%; Pig: 85%; Rat: 85%; Guinea pig: 85%
Protein Families:	ES Cell Differentiation/IPS



[View online »](#)

Product images:



WB Suggested Anti-DBX2 Antibody Titration: 0.2-1 ug/ml; ELISA Titer: 1: 312500; Positive Control: HT1080 cell lysate