

## Product datasheet for **TA342389**

### LHX8 Rabbit Polyclonal Antibody

#### Product data:

Product Type:	Primary Antibodies
Applications:	WB
Recommended Dilution:	WB
Reactivity:	Human
Host:	Rabbit
Isotype:	IgG
Clonality:	Polyclonal
Immunogen:	The immunogen for anti-LHX8 antibody: synthetic peptide directed towards the middle region of human LHX8. Synthetic peptide located within the following region: LSTGEEFALVEEKVLCRVHYDCMLDNLKREVENGNISVEGALLTEQDVN
Formulation:	Liquid. Purified antibody supplied in 1x PBS buffer with 0.09% (w/v) sodium azide and 2% sucrose. <i>Note that this product is shipped as lyophilized powder to China customers.</i>
Conjugation:	Unconjugated
Storage:	Store at -20°C as received.
Stability:	Stable for 12 months from date of receipt.
Predicted Protein Size:	39 kDa
Gene Name:	LIM homeobox 8
Database Link:	<a href="#">NP_001001933</a> <a href="#">Entrez Gene 431707 Human</a> <a href="#">Q68G74</a>
Background:	The protein encoded by this gene is a member of the LIM homeobox family of proteins, which are involved in patterning and differentiation of various tissue types. These proteins contain two tandemly repeated cysteine-rich double-zinc finger motifs known as LIM domains, in addition to a DNA-binding homeodomain. This family member is a transcription factor that plays a role in tooth morphogenesis. It is also involved in oogenesis and in neuronal differentiation. This gene is a candidate gene for cleft palate, and it is also associated with odontoma formation. Alternative splicing of this gene results in multiple transcript variants. [provided by RefSeq, Jan 2012]

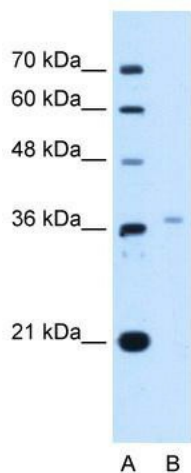


[View online »](#)

**Synonyms:** LHX7

**Note:** Immunogen Sequence Homology: Dog: 100%; Pig: 100%; Rat: 100%; Horse: 100%; Human: 100%; Mouse: 100%; Bovine: 100%; Rabbit: 100%; Guinea pig: 100%

**Product images:**



WB Suggested Anti-LHX8 Antibody Titration: 2.5 ug/ml; Positive Control: HepG2 cell lysate