

Product datasheet for **TA342382**

PAI1 (SERPINE1) Rabbit Polyclonal Antibody

Product data:

| | |
|-------------------------|--|
| Product Type: | Primary Antibodies |
| Applications: | WB |
| Recommended Dilution: | WB |
| Reactivity: | Human |
| Host: | Rabbit |
| Isotype: | IgG |
| Clonality: | Polyclonal |
| Immunogen: | The immunogen for anti-SERPINE1 antibody: synthetic peptide directed towards the N terminal of human SERPINE1. Synthetic peptide located within the following region: VAHLASDFGVRVVFQQAQASKDRNVVFSYGVASVLAMLQLTTGGETQQQ |
| Formulation: | Liquid. Purified antibody supplied in 1x PBS buffer with 0.09% (w/v) sodium azide and 2% sucrose. <i>Note that this product is shipped as lyophilized powder to China customers.</i> |
| Conjugation: | Unconjugated |
| Storage: | Store at -20°C as received. |
| Stability: | Stable for 12 months from date of receipt. |
| Predicted Protein Size: | 43 kDa |
| Gene Name: | serpin family E member 1 |
| Database Link: | NP_000593 Entrez Gene 5054 Human P05121 |
| Background: | This gene encodes a member of the serine proteinase inhibitor (serpin) superfamily. This member is the principal inhibitor of tissue plasminogen activator (tPA) and urokinase (uPA), and hence is an inhibitor of fibrinolysis. Defects in this gene are the cause of plasminogen activator inhibitor-1 deficiency (PAI-1 deficiency), and high concentrations of the gene product are associated with thrombophilia. Alternatively spliced transcript variants encoding different isoforms have been found for this gene. [provided by RefSeq, Sep 2009] |
| Synonyms: | PAI; PAI-1; PAI1; PLANH1 |



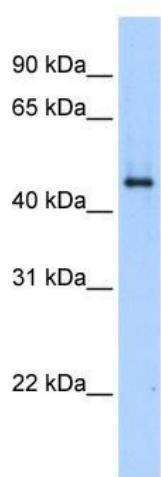
[View online »](#)

Note: Immunogen Sequence Homology: Pig: 100%; Rat: 100%; Human: 100%; Mouse: 100%; Sheep: 100%; Bovine: 100%; Rabbit: 100%; Dog: 93%; Horse: 86%

Protein Families: Druggable Genome, Secreted Protein

Protein Pathways: Complement and coagulation cascades, p53 signaling pathway

Product images:



WB Suggested Anti-SERPINE1 Antibody Titration:
0.2-1 ug/ml; Positive Control: Transfected 293T