

Product datasheet for **TA342381**

KRT23 Rabbit Polyclonal Antibody

Product data:

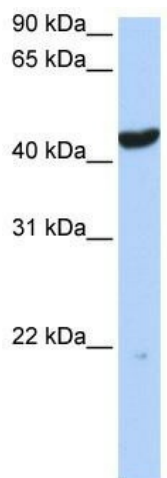
Product Type:	Primary Antibodies
Applications:	IHC, WB
Recommended Dilution:	WB, IHC
Reactivity:	Human
Host:	Rabbit
Isotype:	IgG
Clonality:	Polyclonal
Immunogen:	The immunogen for anti-KRT23 antibody: synthetic peptide directed towards the middle region of human KRT23. Synthetic peptide located within the following region: IKTHLEKEITTYRRLLEGESEGTREESKSSMKVSATPKIKAITQETINGR
Formulation:	Liquid. Purified antibody supplied in 1x PBS buffer with 0.09% (w/v) sodium azide and 2% sucrose. <i>Note that this product is shipped as lyophilized powder to China customers.</i>
Conjugation:	Unconjugated
Storage:	Store at -20°C as received.
Stability:	Stable for 12 months from date of receipt.
Predicted Protein Size:	48 kDa
Gene Name:	keratin 23
Database Link:	NP_056330 Entrez Gene 25984 Human Q9C075
Background:	The protein encoded by this gene is a member of the keratin family. The keratins are intermediate filament proteins responsible for the structural integrity of epithelial cells and are subdivided into cytokeratins and hair keratins. The type I cytokeratins consist of acidic proteins which are arranged in pairs of heterotypic keratin chains. The type I cytokeratin genes are clustered in a region of chromosome 17q12-q21. Alternative splicing results in multiple transcript variants. [provided by RefSeq, Sep 2013]
Synonyms:	CK23; HAIK1; K23



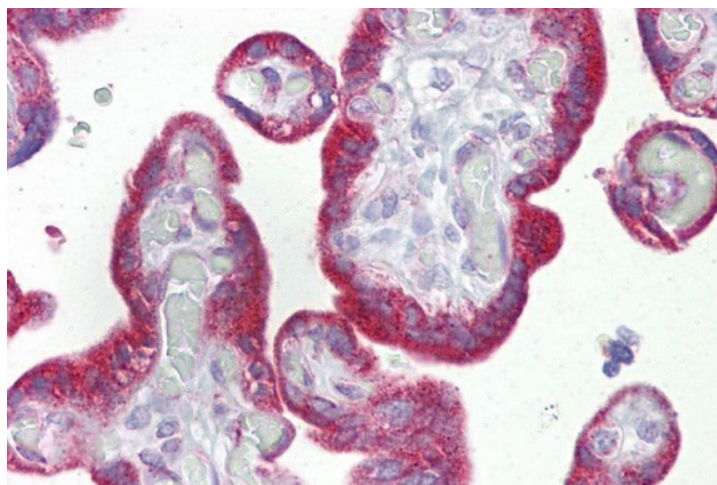
[View online »](#)

Note: Immunogen Sequence Homology: Human: 100%; Dog: 93%; Horse: 86%; Pig: 79%; Guinea pig: 79%

Product images:



WB Suggested Anti-KRT23 Antibody Titration: 0.2-1 ug/ml; ELISA Titer: 1: 62500; Positive Control: 721_B cell lysate



Placenta