

Product datasheet for **TA342378**

ADCY10 Rabbit Polyclonal Antibody

Product data:

Product Type:	Primary Antibodies
Applications:	WB
Recommended Dilution:	WB
Reactivity:	Human
Host:	Rabbit
Isotype:	IgG
Clonality:	Polyclonal
Immunogen:	The immunogen for anti-SAC antibody: synthetic peptide directed towards the N terminal of human SAC. Synthetic peptide located within the following region: VGHTVRHEYTVIGQKVNLAARMMMYYPGIVTCDSVTYNGSNLPAYFFKEL
Formulation:	Liquid. Purified antibody supplied in 1x PBS buffer with 0.09% (w/v) sodium azide and 2% sucrose. <i>Note that this product is shipped as lyophilized powder to China customers.</i>
Conjugation:	Unconjugated
Storage:	Store at -20°C as received.
Stability:	Stable for 12 months from date of receipt.
Predicted Protein Size:	187 kDa
Gene Name:	adenylate cyclase 10 (soluble)
Database Link:	NP_060887 Entrez Gene 55811 Human Q96PN6
Background:	The protein encoded by this gene belongs to a distinct class of adenylyl cyclases that is soluble and insensitive to G protein or forskolin regulation. Activity of this protein is regulated by bicarbonate. Variation at this gene has been observed in patients with absorptive hypercalciuria. Alternatively spliced transcript variants encoding different isoforms have been observed. There is a pseudogene of this gene on chromosome 6. [provided by RefSeq, Jul 2014]
Synonyms:	HCA2; hsAC; SAC; SACI; Sacy



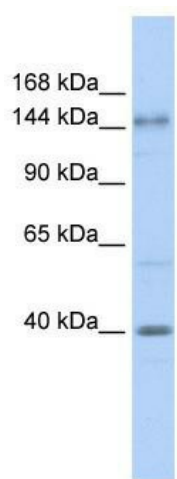
[View online »](#)

Note: Immunogen Sequence Homology: Rat: 100%; Human: 100%; Mouse: 100%; Rabbit: 100%; Dog: 93%; Pig: 93%; Horse: 93%; Bovine: 93%; Guinea pig: 93%

Protein Families: Druggable Genome, Transmembrane

Protein Pathways: Purine metabolism

Product images:



WB Suggested Anti-SAC Antibody Titration: 0.2-1 ug/ml; ELISA Titer: 1: 62500; Positive Control: Human brain