

## Product datasheet for **TA342377**

### ST6GALNAC1 Rabbit Polyclonal Antibody

#### Product data:

Product Type:	Primary Antibodies
Applications:	WB
Recommended Dilution:	WB
Reactivity:	Human
Host:	Rabbit
Isotype:	IgG
Clonality:	Polyclonal
Immunogen:	The immunogen for anti-ST6GALNAC1 antibody: synthetic peptide directed towards the middle region of human ST6GALNAC1. Synthetic peptide located within the following region: LIKGYEQDVGTRTSFYGFATFSLTQSLILGNRGFKNVPLGKDVRYLHFL
Formulation:	Liquid. Purified antibody supplied in 1x PBS buffer with 0.09% (w/v) sodium azide and 2% sucrose.
Conjugation:	Unconjugated
Storage:	Store at -20°C as received.
Stability:	Stable for 12 months from date of receipt.
Predicted Protein Size:	68 kDa
Gene Name:	ST6 N-acetylgalactosaminide alpha-2,6-sialyltransferase 1
Database Link:	<a href="#">NP_060884</a> <a href="#">Entrez Gene 55808 Human</a> <a href="#">Q9NSC7</a>



[View online »](#)

**Background:**

Glycosylation of proteins affects cell-cell interaction, interactions with the matrix, and the functions of intracellular molecules. ST6GALNAC1 transfers a sialic acid, N-acetylneuraminic acid (NeuAc), in an alpha-2,6 linkage to O-linked GalNAc residues. The cancer-associated sialyl-Tn (sTn) antigen is formed by ST6GALNAC1-catalyzed sialylation of GalNAc residues on mucins (Ikehara et al., 1999 [PubMed 10536037]; Sewell et al., 2006 [PubMed 16319059]). [supplied by OMIM, Mar 2008]. Transcript Variant: This variant (2) contains an alternate exon compared to variant 1. The resulting isoform (2) is shorter at the N-terminus compared to isoform 1. ##Evidence-Data-START## Transcript exon combination :: BC063830.1 [ECO:0000332] RNAseq introns :: mixed/partial sample support ERS025082, ERS025083 [ECO:0000350] ##Evidence-Data-END## COMPLETENESS: complete on the 3' end.

**Synonyms:**

HSY11339; SIAT7A; ST6GalNAcI; STYI

**Note:**

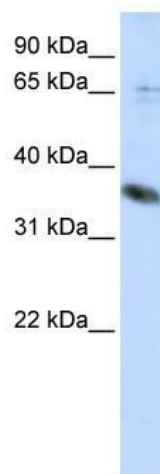
Immunogen Sequence Homology: Dog: 100%; Pig: 100%; Rat: 100%; Horse: 100%; Human: 100%; Mouse: 100%; Rabbit: 100%; Guinea pig: 100%; Bovine: 93%; Zebrafish: 79%

**Protein Families:**

Transmembrane

**Protein Pathways:**

Metabolic pathways, O-Glycan biosynthesis

**Product images:**

WB Suggested Anti-ST6GALNAC1 Antibody  
Titration: 0.2-1 ug/ml; ELISA Titer: 1: 1562500;  
Positive Control: HepG2 cell lysate