

## Product datasheet for **TA342375**

### CHST11 Rabbit Polyclonal Antibody

#### Product data:

Product Type:	Primary Antibodies
Applications:	WB
Recommended Dilution:	WB
Reactivity:	Mouse
Host:	Rabbit
Isotype:	IgG
Clonality:	Polyclonal
Immunogen:	The immunogen for anti-Chst11 antibody is: synthetic peptide directed towards the N-terminal region of Mouse Chst11. Synthetic peptide located within the following region: RMLVATCFGSFILVIFYFQSMMLHPVMRRNPFGVDICCRKGSRSPLQELYN
Formulation:	Liquid. Purified antibody supplied in 1x PBS buffer with 0.09% (w/v) sodium azide and 2% sucrose. <i>Note that this product is shipped as lyophilized powder to China customers.</i>
Conjugation:	Unconjugated
Storage:	Store at -20°C as received.
Stability:	Stable for 12 months from date of receipt.
Predicted Protein Size:	42 kDa
Gene Name:	carbohydrate (chondroitin 4) sulfotransferase 11
Database Link:	<a href="#">NP_060883</a> <a href="#">Entrez Gene 58250 Mouse</a> <a href="#">Q9NPF2</a>
Background:	Catalyzes the transfer of sulfate to position 4 of the N-acetylgalactosamine (GalNAc) residue of chondroitin. Chondroitin sulfate constitutes the predominant proteoglycan present in cartilage and is distributed on the surfaces of many cells and extracellular matrices. Can also sulfate Gal residues in desulfated dermatan sulfate. Preferentially sulfates in GlcA->GalNAc unit than in IdoA->GalNAc unit. Does not form 4, 6-di-O-sulfated GalNAc when chondroitin sulfate C is used as an acceptor.
Synonyms:	C4ST; C4ST-1; C4ST1; HSA269537



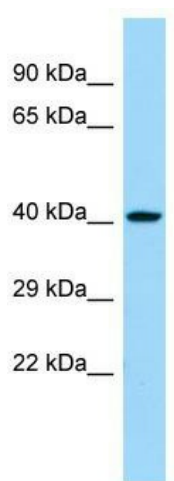
[View online »](#)

**Note:** Immunogen Sequence Homology: Dog: 100%; Pig: 100%; Rat: 100%; Horse: 100%; Human: 100%; Mouse: 100%; Bovine: 100%; Rabbit: 100%; Guinea pig: 100%; Zebrafish: 86%

**Protein Families:** Transmembrane

**Protein Pathways:** Chondroitin sulfate biosynthesis, Sulfur metabolism

**Product images:**



Host: Rabbit; Target Name: Chst11; Sample Tissue: Mouse Stomach lysates; Antibody Dilution: 1.0 ug/ml