

Product datasheet for **TA342373**

GIMAP5 Rabbit Polyclonal Antibody

Product data:

Product Type:	Primary Antibodies
Applications:	WB
Recommended Dilution:	WB
Reactivity:	Human
Host:	Rabbit
Isotype:	IgG
Clonality:	Polyclonal
Immunogen:	The immunogen for anti-GIMAP5 antibody: synthetic peptide directed towards the middle region of human GIMAP5. Synthetic peptide located within the following region: CERRYCAFNNWGSVEEQRQQQAELLAVIERLGREREGSFHSNDLFLDAQL
Formulation:	Liquid. Purified antibody supplied in 1x PBS buffer with 0.09% (w/v) sodium azide and 2% sucrose. <i>Note that this product is shipped as lyophilized powder to China customers.</i>
Conjugation:	Unconjugated
Storage:	Store at -20°C as received.
Stability:	Stable for 12 months from date of receipt.
Predicted Protein Size:	35 kDa
Gene Name:	GTPase, IMAP family member 5
Database Link:	NP_060854 Entrez Gene 55340 Human Q96F15
Background:	This gene encodes a protein belonging to the GTP-binding superfamily and to the immun-associated nucleotide (IAN) subfamily of nucleotide-binding proteins. In humans, the IAN subfamily genes are located in a cluster at 7q36.1. This gene encodes an antiapoptotic protein that functions in T-cell survival. Polymorphisms in this gene are associated with systemic lupus erythematosus. Read-through transcription exists between this gene and the neighboring upstream GIMAP1 (GTPase, IMAP family member 1) gene. [provided by RefSeq, Dec 2010]



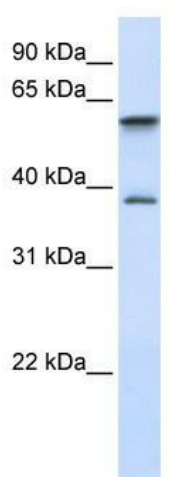
[View online »](#)

Synonyms: HIMAP3; IAN-5; IAN4; IAN4L1; IAN5; IMAP3; IROD

Note: Immunogen Sequence Homology: Human: 100%; Mouse: 100%; Rat: 92%; Horse: 92%; Rabbit: 86%

Protein Families: Transmembrane

Product images:



WB Suggested Anti-GIMAP5 Antibody Titration:
0.2-1 ug/ml; ELISA Titer: 1: 312500; Positive
Control: Human Placenta